

# THE VEGETATION OF CUCPHUONG NATIONAL PARK, VIETNAM

NGUYEN NGHIA THIN

*Department of Botany*  
*Vietnam National University of Hanoi*  
VIETNAM

## ABSTRACT

Cucphuong National Park, situated about 120 km south from Hanoi, northern Vietnam, is the first National Park of Vietnam. It occupies approximately 22,220 hectares. The flora is rich containing 1,924 species in 990 genera and 229 families. It is characterised by the following: Fabaceae, Euphorbiaceae, Rubiaceae, Asteraceae, Lauraceae, Moraceae, Anacardiaceae, Combretaceae and Juglandaceae. The dominant genera of the flora are of *Shorea*, *Terminalia*, *Dracontomelum*, *Cinnamomum*, *Hiretiera*, *Anamocarya*, *Tetrameles*. The life-forms of the flora are diverse and shown the following: SB = 60.44 Ph + 9.77 Ch + 11.57 H + 7.82 Cr. + 10.29 Th, in which Ph = 13.37 MM + 13.32 Mi + 10.08 Na + 11.42 Lp + 11.37 Ep + 0.67 Pp + 0.33 Hp.

## RESUMEN

El Parque Nacional de Cucphuong, situado unos 120 km al sur de Hanoi, Vietnam del Norte, es el primer Parque Nacional de Vietnam. Ocupa aproximadamente 22,220 hectáreas. La flora es rica, ya que contiene 1,924 especies pertenecientes a 990 géneros y 229 familias. Se caracteriza por las siguientes: Fabaceae, Euphorbiaceae, Rubiaceae, Asteraceae, Lauraceae, Moraceae, Anacardiaceae, Combretaceae y Juglandaceae. Los géneros dominantes de la flora son *Shorea*, *Terminalia*, *Dracontomelum*, *Cinnamomum*, *Hiretiera*, *Anamocarya*, *Tetrameles*. Las formas vitales de la flora son diversas y muestran lo siguiente: SB = 60.44 Ph + 9.77 Ch + 11.57 H + 7.82 Cr. + 10.29 Th, donde Ph = 13.37 MM + 13.32 Mi + 10.08 Na + 11.42 Lp + 11.37 Ep + 0.67 Pp + 0.33 Hp.

## INTRODUCTION

Cucphuong is situated about 120 km south of Hanoi on the boundary intersection of three provinces Hoabinh, Ninhbinh and Thanhhoa, with longitudes from 105°24'E to 105°44'E and latitudes from 20°14'N to 20°24'N (Fig. 1). It was classified for the first time as a primary forest area in 1960 and declared the first National Park of Vietnam in 1962 by the Vietnam Government. It occupies approximately 22,220 hectares and includes a part of a limestone belt running from northwest Vietnam to the seashore in Ninhbinh Province. Geographical and topographical conditions are complex and thus the flora and fauna are also of great diversity.

### Topography

Cucphuong is situated on karst limestone mountains with many caves,

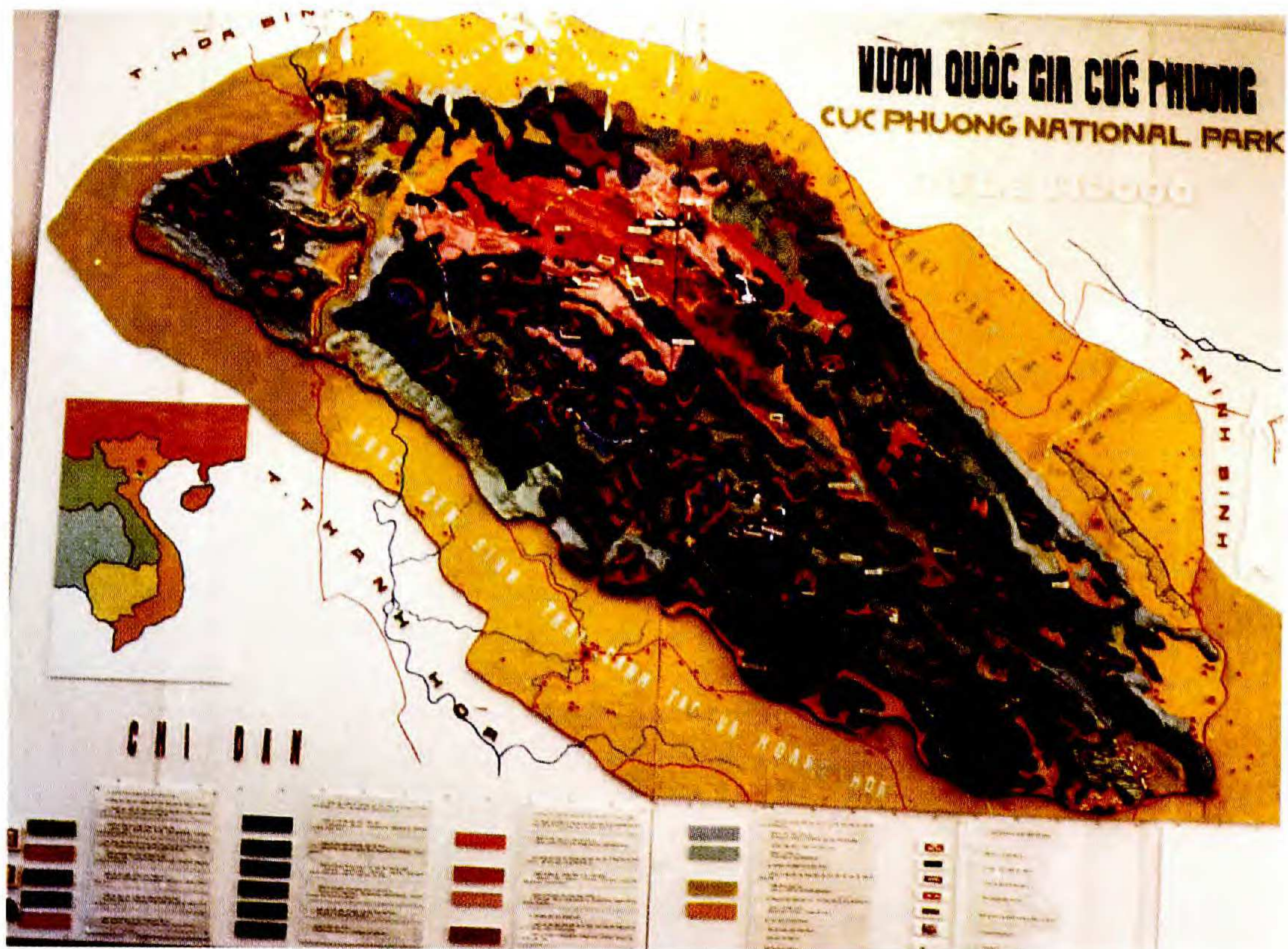


FIG. 1. Cucphuong National Park.

including Hang Dang or Dong Nguoi Xua (the cave of Primitive man) in which human archeological remains dated to 7,000 years ago have been found. In some caves, the mountains serve as natural walls to protect its diverse flora and fauna. The highest point is 650 m.

One large valley is oriented in a northwest-southeast direction. Many other small valleys, separated from one another, contain many interesting features of natural history.

### Climate

Cucphuong has a monsoon, tropical climate with an average annual temperature during the year of 24.7°C, with a minimum 16.6°C, and a maximum 39°C. The average rainfall is 2,157 mm, with an average humidity of 90%.

### Soil

The Cucphuong soil is derived from limestone, with schist, argillite and quartz. There are different kinds of soil varying from the foot to the top of the limestone mountains including Rensin red greiss-yellow, red-yellow, black, margalite-ferralite yellow. On the non-limestone mountains, there are several types of soil, such as ferralite yellow and ferralite yellow-red. In general, the soil of Cucphuong is of a light texture, and is generally moist because of its rather favourable character of imbibition.

### Streams and water regimes

Song Buoï River is the only river passing through the northwest part of Cucphuong, and many streamlets occur in the summer. The streamlets dry up in the winter due to the shortage of rainfall in Cucphuong.

#### DIVERSITY OF FLORA

On the basis of collected specimens—which are deposited in the Cucphuong herbarium (CP) and on the basis of local floras (Anonymous 1971; Aubreville 1960–1994; Do Tat Loi 1991, Chan et al. 1995; Lecomte 1907–1951; Thin 1987, 1992; Pocs 1965; Trung 1978; Vu Nguyen 1987)—1,924 species in 990 genera and 229 families of higher plants have been identified and arranged according to Takhtajan's system (Takhtajan 1966, 1969). The major groups (7 divisions) are listed in Table 1.

All representatives of higher plant divisions are present in the Cucphuong forest. As expected, the most diverse and profuse division is Angiospermae. Gymnospermae are poorly represented with three species; *Podocarpus fleuryi* (Podocarpaceae) is a relict of the Tertiary era. Its pollen record shows that it grew in this area in the Tertiary period (Colani 1920; Trinh Danh 1985, 1986). It is fairly common on the slopes of the limestone hills. Equisetophyta is represented only by one species of *Equisetum*. Bryophyta have been well studied is the most complete for any park in Vietnam, with 125 species in 70 genera of 31 families (Pocs 1965b). This group also shows the relatively primary character of the forest area. Polypodiophyta is rather diverse, with 127 species in 56 genera of 27 families. Some relict genera are also present here such as *Cyathea* (Fig. 2), *Angiopteris*, *Archangiopteris* and *Cibotium*. Table 2 lists the most common genera and the number of species for the Cucphuong flora.

The Angiospermae is the most diverse, especially the class Dicotyledones (Table 1). The numbers of species in selected families are noted: Fabaceae (107 sp.), Euphorbiaceae (101), Rubiaceae (78), Asteraceae (64), Lauraceae (54), with Moraceae, Anacardiaceae, Combretaceae, and Juglandaceae, following. Some families have a small number of species but may be quite dominant, such as Sterculiaceae, and Dipterocarpaceae. Species of *Heritiera* (Sterculiaceae) are seen everywhere in the forest, the leaves often conspicuous with silver white undersides. In the Dipterocarpaceae, *Shorea chinensis* is common. These trees have straight unbranched trunks to 65 m high and 1.5 m diameter. *Terminalia myriocarpa* (Combretaceae) (Fig. 3) has trunks to 45 m high and 5.5 m diameter. *Tetrameles nudiflora* (Datisceae) (Fig. 4) has a straight trunks, 45 m high and 5.5 m diameter. *Cinnamomum balansae* (Lauraceae, called "Vu huong") has trunks of fragrant wood, 48 m high and 2.5 m diameter. *Dracontomelum duperreanum* (Anacardiaceae) is well-known for its huge buttresses.

TABLE 1. The flora of the Cucphuong National Park is diverse, for a small area with about 0.7% of the total for Vietnam, yet the number of plant species reaches almost 25% of the total species reported for the country.

Taxon	Number		
	Species	Genera	Families
Bryophyta	125	70	31
Psilotophyta	1	1	1
Lycopodiophyta	9	2	2
Equisetophyta	1	1	1
Polypodiophyta	127	56	27
Gymnospermae	3	3	3
Angiospermae			
Dicotyledones	1,281	674	134
Monocotyledones	377	183	30

There are many lianas growing upwards by attaching themselves to the forest trees including *Gnetum* sp. (Gnetaceae). Of the Angiospermae, there are lianas in Sterculiaceae (2 sp.), Fabaceae (3 sp.), and Apocynaceae (1 sp.). *Entada phaseoides* (Fabaceae) with stems 10–20 m long and 20–25 cm in diameter (Fig. 5), *Bauhinia scandens* with stems 10 m long and 10–15 cm in diameter, and *Acacia pennata* (Fabaceae) are very common. There are seven species of *Ficus* (Moraceae), some of *Schefflera* (Araliaceae), and *Fagraea* (Loganiaceae) strangling and twining around neighbouring trees (Table 3), that start life as epiphytes and whose roots grow down, interlacing around their support. Eventually the host dies as it is shaded out, leaving the strangler supporting itself.

Various species of shade-loving epiphytes include *Psilotum nudum*, *Lycopodium carinatum*, *Mecodium exsertum*, *Lomariopsis spectabilis*, *Lemmaphyllum microphyllum* var. *obovatum*, *Leptochilus laciniatus* var. *simplex*, *Loxogramme lankokiensis*, *Vittaria* (7 spp.), *Ficus pumila* and *Aglaonema* sp.

Light-loving epiphytes on branches of high trees include such orchids as *Aerides odoratum*, *Cirrhopetalum siamense*, *Cymbidium aloifolium*, *Dendrobium* spp., *Luisia teretifolia*, *Oberonia*, *Rhynchostylis gigantea*, *Sarcanthus* spp., *Thrixspermum centipeda*, and *Vanda* species. Also, there are *Anadendron latifolium*, *Pothos* spp., and *Rhaphidophora* spp. (Araceae); and *Drynaria fortunei* (Polypodiaceae), as well as many species of lichens and mosses.

At ground level very few plants occur except those which obtain nutrients from decaying plant matter such as *Balanophora* (Balanophoraceae) (3 sp.) and other parasitic species living on the roots of other plants.

Some others are semiparasitic living on the branches of other plants as *Viscum* (Viscaceae) living on *Liquidambar formosana*; *Viscum* and *Loranthus* spp. (Loranthaceae), and on other plants such as *Averrhoa carambola*, *Ficus* sp., and *Citrus* spp. A great number of species with lovely flowers and leaf

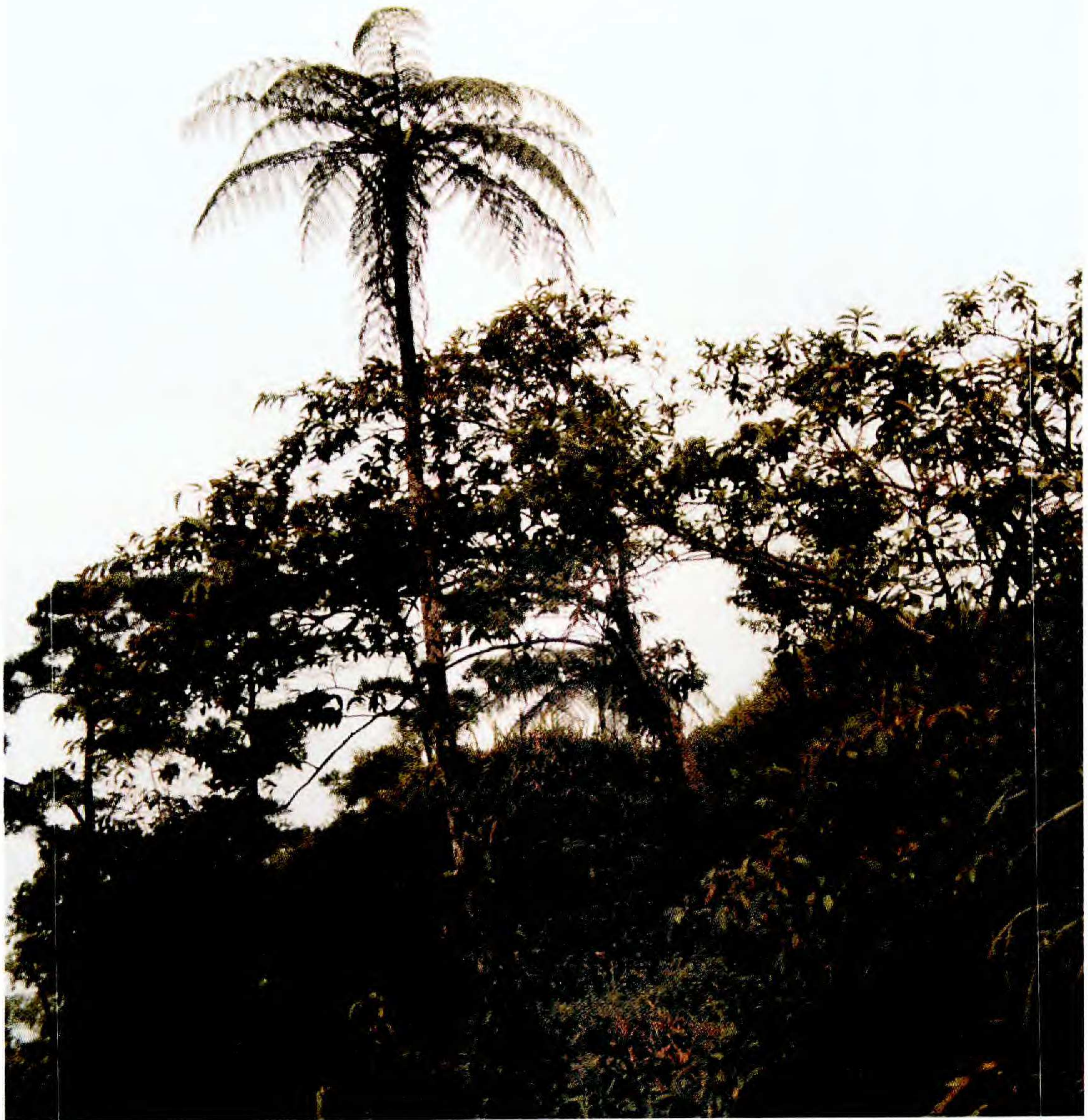


FIG. 2. *Cyathea contaminans* (Cyatheaceae).

shapes are *Paris chinensis*, *P. hainanensis* (Trilliaceae) (Fig. 6), *Amorphophallus paeonifolia* (Fig. 7), *A. rivieri*, *A. tonkinensis*, *Arisaema balansae* (Araceae), *Angiopteris repandula* (Marattiaceae), *Milletia ichthyochtona*, *Saraca dives* (Fabaceae), *Firmiana colorata* (Sterculiaceae), *Aerides odoratum*, *Dendrobium lindleyi*, *D. superbum*, *Vanda teres*, *Paphiopedilum appletonianum*, *P. delenatii*, *Haemaria discolor* (Orchidaceae), *Tacca chantrieri* (Taccaceae). Some plants are cauliflorous such as *Baccaurea ramiflora*, *Meliantha suavis*, *Ficus* spp., and *Dimerocarpus brennieri*.

#### STRUCTURE OF FLORA

The Cucphuong flora is characterized by the stamps of the tertiary era flora of North Vietnam and South China (Trung 1978). It includes

TABLE 2. The most common genera with number of species for the Cucphuong National Park.

Genus	Spp.	Genus	Spp.
<b>Pteridophytes</b>		<i>Blumea</i>	9
<i>Selaginella</i>	7	<i>Callicarpa</i>	9
<i>Tectaria</i>	7	<i>Justicia</i>	9
<i>Colysis</i>	8	<i>Mallotus</i>	9
<i>Lygodium</i>	8	<i>Antidesma</i>	10
<i>Asplenium</i>	9	<i>Carex</i>	10
<i>Pteris</i>	9	<i>Clerodendrum</i>	10
<i>Cyclosorus</i>	10	<i>Beilschmiedia</i>	11
<b>Spermatophytes</b>		<i>Dendrobium</i>	11
<i>Croton</i>	8	<i>Litsea</i>	12
<i>Eragrostis</i>	8	<i>Polygonum</i>	12
<i>Phyllanthus</i>	8	<i>Cyperus</i>	13
<i>Schefflera</i>	8	<i>Desmodium</i>	13
<i>Callicarpa</i>	8	<i>Syzygium</i>	14
<i>Cinnamomum</i>	9	<i>Ardisia</i>	15
<i>Fimbristylis</i>	9	<i>Ficus</i>	38

many species of Fagaceae, Fabaceae, Lauraceae, Juglandaceae, Altingiaceae, Ebenaceae, Annonaceae, Sterculaceae, Meliaceae, Sapindaceae, Magnoliaceae, and Anacardiaceae, and most species of Gymnospermae. Fossil evidence also affirms that earlier plants similar to the present species, such as *Cinnamomum balansae*, *Heritiera macrophylla*, *Celtis sinensis*, *Liquidambar formosana*, *Saraca dives*, and *Amoora gigantea* occurred in this area (Colani 1920; Trinh 1985, 1986).

Cucphuong is a place where many different floras overlap (Pocs 1965a, 1965b) because it is the meeting point of mountain ranges from the Himalaya running northwest-southeast, from South China running north-south, and from South Vietnam running north-south.

The flora Malesiana elements are characterized by species linked to a hot and humid climate derived from Borneo (Trung 1978). These elements entered Vietnam in the Tertiary Era (Trung 1978, Danh 1986) and include species of Dipterocarpaceae. Although the number of species is low, the number of individuals is relatively great.

The Himalayan element of the flora is characterised by temperate species from Yunnan, Quichau and Himalaya including numbers of Fagaceae, Aceraceae, Oleaceae, Ulmaceae, Hippocastanaceae, Trilliaceae, and Juglandaceae.

The Indo-Burmese element of the flora is characterised by deciduous species like *Terminalia myriocarpa*, *Combretum* spp., *Anogeissus acuminata* (Combretaceae), *Lagerstroemia corniculata* (Lythraceae), *Bombax malabaricum* (Bombacaceae), *Tetrameles nudiflora* (Datiscaceae), and *Sapindus saponaria* (Sapindaceae).

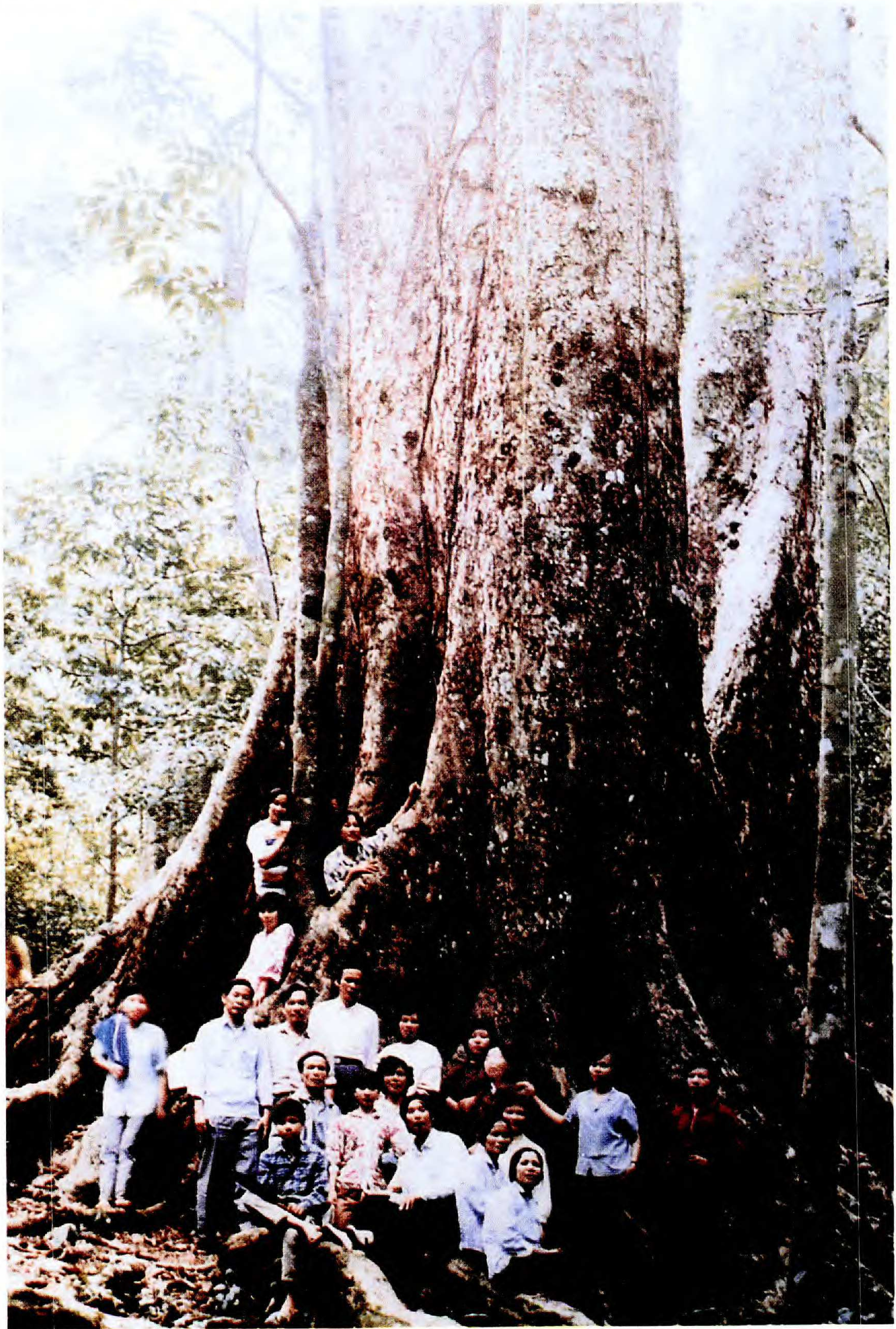


FIG. 3. *Terminalia myriocarpa* (Combretaceae) with trunks to 45 m high and 5.5 m in diameter.



FIG. 4. *Tetrameles nudiflora* (Datiscaceae) with straight trunks, 45 m high and 5.5m in diameter.





FIG. 5. *Entada phaseoides* (Fabaceae) with stems 10–20 m long and 20–25 cm in diameter.

TABLE 3. Lianas and strangling epiphytes of the Cucphuong forest.

<i>Ficus annulata</i>	<i>Ficus pilosa</i>
<i>Ficus benjamina</i>	<i>Ficus religiosa</i>
<i>Ficus glaberrima</i>	<i>Ficus retusa</i>
<i>Ficus gibbosa</i>	<i>Schefflera glomerulata</i>
<i>Ficus lacor</i>	<i>Fagraea obovata</i>
<i>Ficus obtusifolia</i>	

## DISTRIBUTION OF THE CUCPHUONG FLORA

Plant groups are divided on the basis of types of the topography and the soil.

**Plants on the summits of limestone mountains**

On summits from 300–560 m altitude with sharp hard rocks and with black renzin soil, the humidity is low and the evaporation rate is high. The diversity of plants include 65 common species such as *Cycas balansae*, *Cinnamomum validinerve*, *Neolitsea zeylanica*, *Illicium griffithii*, *Quercus* sp., *Platycarya strobilacea*, *Eriobotrya benghalensis*, *E. japonica*, *E. sp.*, *Tirpitzia chinensis*, *Schefflera pes-avis*, *Calophyllum balansae*, *C. bonii*, *Dracaena cambodiana*, *Diospyros mun*, *Mitrephora calcarea*, *Diospyros* sp., *Xerospermum tonkinensis*, *Canthium dicoccum*, *Sinosideroxylon racemosum*, *Murraya koenigii*, *M. paniculata*, *Jasminum lanceolarium*, *J. longisetum*, *Trigonostemon bonianus*, *Drypetes perreticulatus*, *Paphiopedilum appletonianum*, *P. delenatii*, and *Dendrobium dentatum*.

**Plants on slopes of limestone mountains**

Plants growing on the slopes include some 200 species, of which there are 14 species of Pteridophytes, two species of Gymnospermae, and 184 species of Angiospermae. The common tree species include *Streblus ilicifolius*, *Dimerocarpus brennieri*, *Teonongia tonkinensis*, *Heritiera macrophylla*, *H. cucphuongensis*, *Pterospermum truncolobatum*, *P. heterophyllum*, and *Ficus gibbosa*. Many species of understory shrubs and herbs have large thin leaves, providing a large light-absorbing surface, notably species of Pteridophytes, Euphorbiaceae, Rubiaceae, Urticaceae, and Araceae.

**Plants in the valleys**

In valleys between limestone walls the humidity is high. The soil is of macgalis ferralit brown-yellow. The flora here includes 1,219 species belonging to Bryophyta, Pteridophyta and Angiospermae. Many tree species have straight unbranched trunks, or have buttresses or stilt roots providing additional support. Their glabrous leaves have drip tips probably to prevent water accumulating after rain. Examples are *Tetrameles nudiflora*, *Shorea chinensis*, *Terminalia myriocarpa*, *Anogeissus acuminata*, *Cinnamomum balansae*, *Pometia pinnata*, *Erythrophloeum fordii*, *Dracontomelum duperreanum*, and *Vatica harmandiana*.



FIG. 6. *Paris chinensis* (Trilliaceae).



FIG. 7. *Amorphophallus paeoniifolia* (Araceae).

### Plants on non-limestone soil

This group has 440 species especially in the following genera: *Machilus*, *Phoebe*, *Litsea*, *Cinnamomum* (Lauraceae), *Aglaia*, *Amoora*, *Chisocheton*, *Dysoxylum*, *Heynea* (Meliaceae), *Castanopsis*, *Lithocarpus* (Fagaceae), *Elaeocarpus* (Elaeocarpaceae), *Macaranga*, *Endospermum*, *Bischofia*, and *Sapium* (Euphorbiaceae).

The distribution of plants in Cucphuong is interesting. The number of species decreases from the valley to the top of the mountains. The greatest number of Pteridophyte species occurs chiefly in the valleys and under the canopy of the forest.

#### DIVERSITY OF LIFE-FORMS

Life-forms are an ecological characteristic of every flora. Spectrum of the life-forms is truly a reflective mirror of ecological conditions as well as a primary or secondary character of the flora in the studied region, and also provides information on conservation and suitable use of the plant resources. On the basis of the classification categories of Raunkiaer (1934), the spectrum of the life-forms of the Cucphuong flora was established including five main groups as follows (Table 4, Fig. 8):

**1. Phanerophytes (Ph).**—This group includes 1,175 species in 151 families making up 60.44% of the total flora (Fig. 8). This dominant group includes seven subgroups.

*1.1. Mega- and Meso-phanerophytes (MM).*—This includes 260 large woody species taller than 8 m (13.37% of the total flora) (Fig. 9). The species-rich families are Lauraceae (37 sp.), Euphorbiaceae (22 sp.), and Moraceae (20 sp.). The high proportion of species belongs to the following families: Bignoniaceae 6/6 species, Buseraceae 6/6, Elaeocarpaceae 8/9, Fagaceae 10/12. Some large size species include *Shorea chinensis* (Dipterocarpaceae), *Tetrameles nudiflora* (Datisceae), *Terminalia myriocarpa* (Combretaceae), *Elaeocarpus* (Elaeocarpaceae), *Dracontomelum duperreanum* (Anacardiaceae), and *Cinnamomum balansae* (Lauraceae).

*1.2. Microphanerophytes (Mi).*—This includes 257 short woody species (2–8 m) (13.32% of the total flora) (Fig. 9). The species-rich families are Euphorbiaceae (15 sp.) and Annonaceae (14 sp.).

*1.3. Nanophanerophytes (Na).*—This includes 196 species in 46 families (10.08% of the total flora) (Fig. 9). The species-rich families are Rubiaceae (24 sp.), Myrsinaceae (20 sp.), Acanthaceae (19 sp.), Fabaceae (18 sp.), and Euphorbiaceae (17 sp.).

*1.4. Lianphanerophytes (Lp).*—This includes 222 species in 40 families (about 11.42% of the total flora) (Fig. 9). The species-rich families are Fabaceae (33 sp.) and Rubiaceae (18 sp.). This group is characteristic of

TABLE 4. Life-forms of Cucphuong flora.

Life-form	Number of species	Rate
1. Phanerophytes (Ph)	1175	60.44
1.1. Mega-Mesophanerophytes (MM)	260	13.37
1.2. Microphanerophytes (Mi)	257	13.32
1.3. Nanophanerophytes (Na)	196	10.08
1.4. Lianphanerophytes (Lp)	222	11.42
1.5. Epiphyte-phanerophytes (Ep)	221	11.37
1.6. Hemi- and Parasite-phanerophytes (Pp)	13	0.67
1.7. Herb phanerophytes (Hp)	6	0.33
2. Chamaephytes (Ch)	190	9.77
3. Hemicryptophytes (H)	225	11.57
4. Cryptophytes (Cr)	152	7.82
5. Therophytes (Th)	200	10.29

tropical forest especially woody liannas as *Entada*, *Acacia*, *Bauhinia*, *Strychnos*, *Melodinus*, and *Tetrastigma*.

**1.5. Epiphyte-phanerophytes (Ep).**—This includes 221 species in 35 families going up to 11.37% of the total flora (Fig. 9). The species-rich families are Orchidaceae (48 sp.), Araceae (10 sp.).

**1.6. Hemiparasite- and Parasite-phanerophytes (Pp).**—This include 13 species in four families and makes up about 0.67% of the total flora (Fig. 9).

**1.7. Herb-phanerophytes (Hp).**—This includes six species or about 0.33% of the total flora (Fig. 9).

**2. Chamaephytes (Ch).**—This group includes 190 species in 54 families (9.77% of the total flora) (Fig. 8). The species-rich families are Asteraceae (26 sp.), Fabaceae (24 sp.), Euphorbiaceae (14 sp.) and Acanthaceae (13 sp.).

**3. Hemicryptophytes (H).**—This group includes 225 species in 46 families or 11.57% of the total flora (Fig. 8). The species-rich families are Poaceae (36 sp.), Orchidaceae (15 sp.), Thelipteridaceae (14 sp.) and Cyperaceae (14 sp.).

**4. Cryptophytes (Cr).**—This group includes 152 species in 42 families constituting 7.82% of the total flora (Fig. 8). The species-rich families are Orchidaceae (25 sp.), Convallariaceae (20 sp.), Zingiberaceae (14 sp.) and Cyperaceae (11 sp.).

**5. Theophytes (Th).**—This group is characteristic for grassland patches next to human activities or along swamps. It consist of 200 species in 41 families (10.29% of the total flora) (Fig. 8). The greatest number of species are chiefly in the Poaceae (35 sp.), Cyperaceae (27) and Asteraceae (26); they are light-loving.

In short, the spectrum of the life-forms of the Cucphuong flora is shown: SB (Spectrum of Biology) = 60.44 Ph + 9.77 Ch + 11.57 H + 7.82 Cr +

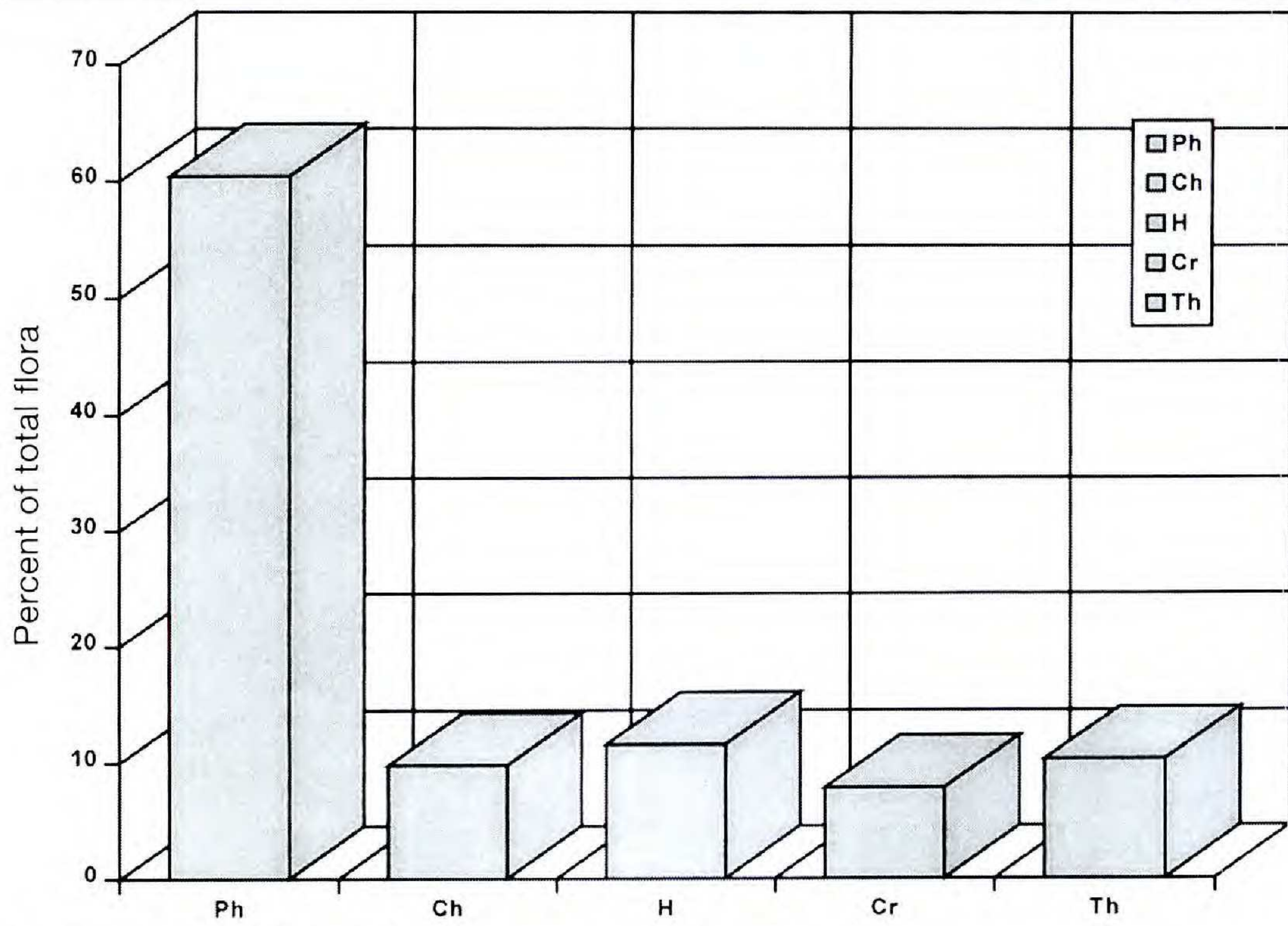


FIG. 8: Spectrum of main life-form groups of Cucphuong flora.

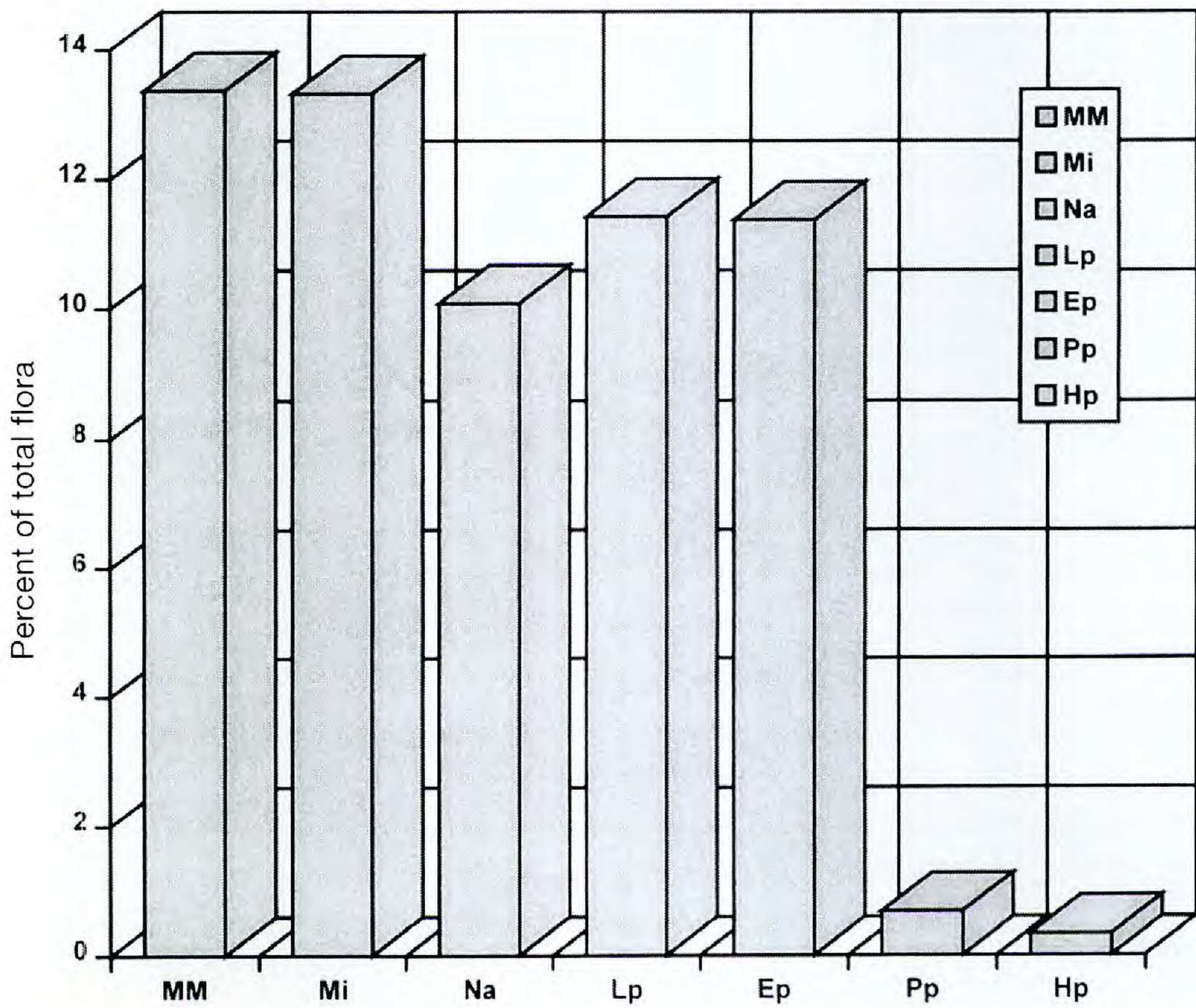


FIG. 9: Spectrum of subgroups of phanerophytes life-form of Cucphuong flora.

10.29 Th, in which Ph = 13.37 MM + 13.32 Mi + 10.08 Na + 11.42 Lp + 11.37 Ep + 0.67 Pp + 0.33 Hp.

If making comparison with the spectra of life-forms from North Vietnam (Pocs 1965a) and from Lamson, Luongson, Hoabinh (Le Tran Chan, Phan Ke Loc, Nguyen Nghia Thin, Nong Van Tiep, 1994) where is near the Cucphuong National Park but destroyed seriously by human activities (Figs. 1, 2) it is clear that the Cucphuong flora is much more primary than the North in general and the Lamson flora in particular. This is shown by high rate of Phanerophytes group and low of Chamaephytes, Hemicryptophytes and Cryptophytes.

#### ACKNOWLEDGMENTS

I would like to thank Barney Lipscomb for help during past few years and B.C. Stone and John Pipoly for comments and corrections.

#### APPENDIX

### CHECKLIST OF SPECIES FOUND IN THE CUCPHUONG NATIONAL PARK

*Format:* Distribution and soil type follows: V—Valleys, SL—Slopes of limestone mountains, SUM—Summits of limestone mountains, NL—Non-limestone soil.

*Life-forms:* Ph—Phanerophytes including MM—Mega-or Meso-phanerophytes, Mi—Microphanerophytes, Nan—Nanophanerophytes, Lp—Liana-phanerophytes, Ep—Epiphyte—phanerophytes, Pp—Parasite or Hemiparasite-phanerophytes, Hp—Herb-phanerophytes; Ch—Chamaephytes; H—Hemicryptophytes; Cr—Cryptophytes; Th—Theophytes.

#### BRYOPHYTA

##### ANTHOCEROPSIDA

##### ANTHOCROTACEAE

*Anthoceros miyabenus* Steph., V

##### MARCHANTIOPSIDA

##### FRULLANIACEAE

*Frullania grandipula* Lindenb., V

*Frullania moniliata* (Reinw. Blume & Nees)  
Nees, V

##### LEJEUNEACEAE

*Aphanolejeunea proboscoidea* Goeb., V

*Cheilolejeunea meyeniana* (Steph.) Kach. &  
Schust., V

*Cololejeunea appressa* Bx., V

*Cololejeunea bichiana* Tixier, V

*Cololejeunea crysanthemi* Tixier, V

*Cololejeunea dankianensis* Tixier, V

*Cololejeunea floccosa* (L. & L.) Steph., V

*Cololejeunea formosana* Miz., V

*Cololejeunea grusbvtzkiana* Pocs, V

*Cololejeunea haskarliama* (Gott.) Bx., V

*Cololejeunea karstenii* Steph., V

*Cololejeunea lanciloba* Steph., V

*Cololejeunea ninbinhiana* Tixier, V

*Cololejeunea nymanii* Steph., V

*Cololejeunea tramminhiana* Tixier, V

*Colura acutifolia* Ast., V

*Colura ari* Steph., V

*Lejeunea flava* (Sw.) Nees, V

*Leptolejeunea balansae* Steph., V

*Leptolejeunea subacuta* Steph., V

*Leptolejeunea vitrea* (Nees) Steph., V

*Lopholejeunea vietnamica* Tixier, V



**LOPHOCOLEACEAE***Heterocyphus argutus* (Nees) Schiffn., V**MARCHANTIACEAE***Marchantia palmata* Nees, V**PLAGIOCHILACEAE***Plagiochila acanthophylla* Gott., V*Plagiochila fissifolia* Steph., V*Plagiochila fordiana* Steph., V*Plagiochila subplanata* Inoue H., V**RADULACEAE***Radula acuminata* Steph., V**BRYOPSIDA****AMBLYSTEGIACEAE***Scriaroniopsis bonianum* (Besch.) Tixier, V**BARTRAMIACEAE***Philonotis revoluta* Bosch & Lacout., V**BRANCHYTHECIACEAE***Cirriphyllum oxyrrhynchum* (Doz. & Molk.) M. Fleisch., V*Rhynchostegium aciculum* (Broth. & Par.) M. Fleisch., V*Rhynchostegium colebicum* (Lacout.) Jaeg., V*Rhynchostegium vagans* (Harv.) Jaeg., V**BRYACEAE***Bryum ambiguum* Duby., V**CALYMPERACEAE***Syrrophodon larmitani* M. Fleisch., V**DALTONIACEAE***Cyathophorella tonkinensis* (Broth. & Par.) Broth., V**DICRANACEAE***Dicranella eustegia* (C. Muell.) Bosch & Lacout., V*Holomitrium griffithianum* Mitt., V*Leucoloma molle* (C. Muell.) Mitt., V*Leucophanes candidum* (Hornsch.) Lindl., V*Trematodon longicollis* Michx., V**ENTODONTACEAE***Erythrodontium flarascens* (Hook.) Bosch & Lacout., V*Erythrodontium julaceum* (Hook.) Par., V*Tetrachyphyllum inflexum* (Harv.) Gepp., V**FABRONIACEAE***Campylodontium flavascochs* (Hook.) Bosch & Lacout., V**FISSIDENTACEAE***Fissidens bollianus* Doz. & Hook., V*Fissidens incertus* Ther., V*Fissidens nobilis* Griff., V*Fissidens sylvaticus* Griff., V*Fissidens sollingeri* Montg., V**FUNARIACEAE***Physcomitrium repandum* (Griff.) Mitt., V**HOOKERIACEAE***Callicestella papillata* Mitt., V*Distichophyllum nigricaulis* Doz. & Molk., V*Hypopterygium apiculatum* Thwait. & Mitt., V*Hypopterygium aristatum* Bosch & Lacout., V*Hypopterygium tenellum* C. Muell., V*Hypopterygium vriesei* Bosch & Lacout., V*Lopodium trichocladon* (Bosch & Lacout.) M. Fleisch., V**HYPNACEAE***Ectropothecium chamissonis* (Hernsch.) Jaeg., V*Ectropothecium monumentorum* (Duby.) Jaeg., V*Isopterygium chlorophyllum* Bosch, V*Isopterygium lignicola* (Mitt.) Jaeg., V*Isopterygium pobliaecarpum* (Sull. & Leag.) Jaeg., V*Taxiphyllum taxirameum* (Mitt.) M. Fleisch., V*Vesicularia reticulata* (Doz. & Molk.) Broth., V*Vesicularia tonkinensis* (Bosch) Broth., V**METEORIACEAE***Aerobryidium fillamentosum* (Hook.) M. Fleisch., V*Aerobryopsis deflexa* Broth. & Par., V*Aerobryopsis longissima* (Doz. & Holk.) M. Fleisch., V*Floribundaria pseudofloribunda* M. Fleisch., V*Meteoriopsis buchanaui* (Brid.) M. Fleisch., V*Meteoriopsis squarrosa* (Hook.) M. Fleisch., V**MNIACEAE***Plagionium rostratum* (Schrad.) Kop. T., V*Plagionium succulentum* (Schard.) Kop. T., V**NECKERACEAE***Calyptothecium wrightii* Mitt., V*Himantocladium plumula* (Nees) M. Fleisch., V*Homaliodelphus targionianus* (Mitt.) Dix., V*Homaliodendron exiguum* (Bosch & Lacout.) M. Fleisch., V*Homaliodendron flabellatum* (Dicks.) M. Fleisch., V*Homaliodendron microdendron* (Bont.) M. Fleisch., V*Homaliodendron scalpellifolium* (Mitt.) M. Fleisch., V*Neckeropsis moutieri* (Broth. & Par.) M. Fleisch., V*Neckeropsis lepianeana* (Hpe ex C. Muell.) Toun., V

- Neckeropsis semperiana* (Mont.) M. Fleisch., V  
*Pinnatella alopecuroides* (Hook.) M. Fleisch., V  
*Pinnatella ambigua* (Lacout.) M. Fleisch., V  
*Pinnatella donghamensis* Besch., V  
*Pinnatella kubliana* (Lacout.) M. Fleisch., V  
*Pinnatella microptera* (C. Muell) M. Fleisch., V

**ORTHOTRICHACEAE**

- Macromitrium gymnostorium* Sull & Lesq., V  
*Macromitrium nepalense* (H. & G.) Schwaegr., V

**PHYLLOGONIACEAE**

- Horikawaea nitida* Nog., V

**POTTIACEAE**

- Hydrogonium pseudochenbergi* (M. Fleisch.) Chen., V  
*Hymenotomum involuta* (Hook.) Jaeg., V  
*Hyophyla involuta* (Hook.) Jaeg., V  
*Pseudosymblepharis papillesula* (Curd. & Their.) Broth., V  
*Trichostomum involutum* Broth., V  
*Trichostomum perivolutum* Tixier, V  
*Weisia longidens* Card., V

**PTEROBRYACEAE**

- Garovaglia crispata* Tixier, V  
*Garovaglia powellii* Besch., V

**RACOPILACEAE**

- Racopilum schmidii* (C. Muell.) Mitt., V

**SEMATOPHYLLACEAE**

- Acanthodadium pocsii* Tixier, V  
*Acanthorrhynchium papillatum* (Harv.) M. Fleisch., V  
*Glossadelphus boutanii* (Broth. & Far.) Broth., V  
*Sematophyllum subhumile* (C. M.) M. Fleisch., V  
*Taxithelium instratum* (Brid.) Broth., V  
*Taxithelium isooladium* (Lacout.) Reh. & Card., V

**TRACHYPODIACEAE**

- Diaphanodon blanius* (Harv.) M. Fleisch., V  
*Pseudospiridentopsis horrida* (Card.) M. Fleisch., V

**THUIDIACEAE**

- Anomodon tonkinensis* Besch., V  
*Claopodium aciculatum* (Broth.) Broth., V  
*Claopodium assurgens* (Sull. & Lesq.) Card., V  
*Haplocladium minutifolium* Their., V  
*Haplocladium sublanceum* (Mitt.) Broth., V  
*Haplobymerium pseudotriste* (C. Muell) Broth., V  
*Herpetineuron tocaea* (Sull. & Lesq.) Ren. & Card., V  
*Pelekium velatum* Mitt., V  
*Thuidium bonianum* Besch., V

- Thuidium cymbifolium* (Dz. & Molk.) Bosch & Lacout., V

- Thuidium meyenianum* (Hpe.) Bosch & Lacout., V

- Thuidium tamaricellum* (Mitt.) Bosch & Lacout., V

**PSILOTOPHYTA****PSILOTACEAE**

- Psilotum nudum* (L.) Griseb. (*P. triquetrum* Sw.), SL, Ep

**LYCOPODIOPHYTA****LYCOPODIACEAE**

- Lycopodium carinatum* Desv., SUM, Ep  
*Lycopodium cernuum* L., NL, H

**SELAGINELLACEAE**

- Selaginella bififormis* A. Br. ex Kuhn, V, H  
*Selaginella decipiens* Warb., V, H  
*Selaginella intermedia* (Blume) Spring, V, H  
*Selaginella pubescens* (Wall.) Spring, V, H  
*Selaginella siamensis* Hieron., V, H  
*Selaginella tamariscina* (Beauv.) Spring, V, H  
*Selaginella wallichii* (Hook. & Griev.) Spring, V, H

**EQUISETOPHYTA****EQUISETACEAE**

- Equisetum ramocissimum* Desf., NL, Cr  
 ssp. *debile* (Roxb.) Hauke (*E. debile* Roxb.)

**POLYPODIOPHYTA****ADIANTACEAE**

- Adiantum caudatum* L., SL, H  
*Adiantum flabellulatum* L., V, H  
*Cheilanthes tenuifolia* (Burm.) Sw., V, Th

**ASPLENIACEAE**

- Asplenium antrophyoides* Christ, V, H  
*Asplenium belangeri* (Bory) Kze, SL, H  
*Asplenium grevillei* Wall., SL, H  
*Asplenium* aff. *grevillei* Wall., SL, H  
*Asplenium griffithianum* Hook., NL, H  
*Asplenium nidus* L., NL, Ep  
*Asplenium pseudolaserpitiifolium* Ching, V, Ep  
*Asplenium saxicola* Ros., SL, H  
*Asplenium unilaterale* Lam., V, H

**AZOLLACEAE**

- Azolla imbricata* (Roxb.) Nakai, NL, Th

**BLECHNACEAE**

- Blechnum orientale* L., NL, Ch  
*Stenochlaena palustris* (Burm.) Bedd., NL, Ch

**CYATHEACEAE**

- Cyathea podophylla* Cop., V, N  
*Cyathea* aff. *contaminans* (Wall.) Cop., V, Mi

**DAVALLIACEAE**

- Arthropteris obliterated* (R. Br.) J. Sm., V, H  
*Davallia formosana* Hay., V, H (*Davallia divaricata* Blume) var. *orientalis* Tard.-Blot & C. Ch.  
*Humata repons* (L.f.) Diels, SUM, Ep  
*Nephrolepis cordifolia* (L.) Presl, SL, H  
*Nephrolepis falcata* (Cav.) G. Ch., V, H

**DENNSTAEDTIACEAE**

- Lindsaea orbiculata* (Lam.) Mett. ex. Kuhn, SL, H  
*Microlepia hokeriana* (Wall.) Fresl, V, H  
*Microlepia marginata* (Houtt.) C. Chr., V, H  
*Microlepia speluncae* (L.) Moore, V, H  
*Microlepia speluncae* (L.) Moore var. *hancei* C. Chr. & Tard.-Blot, V, H  
*Schizoloma ensifolium* (Sw.) J. Sm., SL, H  
*Schizoloma heterophyllum* (Dry.) J. Sm., SL, Cr  
*Stenoloma chusanum* Ching, V, Cr

**DICKSONIACEAE**

- Cibotium barometz* (L.) J. Sm., V, Ch

**DRYOPTERIDACEAE**

- Ctenitopsis* sp., V, H  
*Cyclopeltis* aff. *crenata* (Fee) C. Chr., V, Cr  
*Hemigramma decurrens* (Hook.) Cop., V, H  
*Quercifilix zeylanica* (Houtt.) Cop., NL, H  
*Tectaria decurrens* (Presl) Cop., V, H  
*Tectaria devexa* Cop., V, H  
*Tectaria leuana* Cop., V, H  
*Tectaria quinquefida* Ching, V, H  
*Tectaria simonsii* (Bedd.) Ching, V, H  
*Tectaria subtriphylla* (Hook. & Arn.) Cop., NL, H  
*Tectaria variolosa* (Wall.) C. Chr., V, H

**GLEICHENIACEAE**

- Dicranopteris linearis* (Burm. f.) Underw., NL, Cr (*Gleichenia linearis* Clarke)

**GRAMMITIDACEAE**

- Prosaptia* aff. *urceolaris* Cop. var. *intermedia* (Ching) Ching, SL, H

**HYMENOPHYLLACEAE**

- Crepidomanes bipunctatum* (Poir.) Cop., V, H (*Trichomanes bipunctatum* Poir.)  
*Mecodium exsertum* (Wall.) Cop., V, Ep (*Hymenophyllum exsertum* Wall.)  
*Microgonium beccarianum* (Cesati) Cop., SL, Ep (*Trichomanes motleyi* v. d. B.)  
*Vandenboschia auriculata* (Blume) Cop., SL, Ep (*Trichomanes auriculatum* Blume)

- Vandenboschia cystosciroides* (Christ) Ching, SL, Ep (*Trichomanes cystosciroides* G. Christ)

**LOMARIOPSIDACEAE**

- Bolbitis heteroclita* (Presl) Ching, NL, Ch  
*Lomariopsis spectabilis* Mett., NL, Ep

**MARATTIACEAE**

- Angiopteris* aff. *repandula* de Vriese, V, H  
*Archangiopteris* sp., V, H

**MARSILEACEAE**

- Marsilea minuta* L., NL, Cr  
*Marsilea aquatifolia* L., NL, Cr

**OPHIOGLOSSACEAE**

- Helminthostachys zeylanica* (L.) Hook., NL, Cr

**PARKERIACEAE**

- Ceratopteris thalictroides* Brongn., NL, Th

**POLYPODIACEAE**

- Colysis bonii* Ching, V, Ch  
*Colysis digitata* (Bak.) Ching f. *digitata*, V, Ep f. *annamensis* C. Chr. & Tard. Blot  
*Colysis dissimilata* Ching, V, Ch  
*Colysis pothifolia* (D. Don) Presl, V, Ep (*Colysis elliptica* Ching var. *pothifolia* Ching)  
*Colysis wrightii* Ching, V, Ep  
*Colysis* sp1., V, Ep  
*Colysis* sp2., V, Ep  
*Drynaria fortunei* (Kuntze) J. Sm., SL, Ep  
*Lemmaphyllum microphyllum* Presl var. *obovatum* (Harr.) C. Chr., NL, Ep  
*Leptochilus laciniatus* Ching var. *simplex* Ching, V, Ep  
*Loxogramme lankokiensis* C. Chr., V, Ep  
*Microsorium dilatatum* (Bedd.) Sledge, V, Ch (*M. hancocki* (Bak.) Ching)  
*Microsorium steerei* Ching, V, Ch  
*Neocheropteris phyllomanes* (Christ) Ching, SL, Ch  
*Phymatosorus longissima* (Moore) J. Sm., V, Ch  
*Phymatosorus* sp., SL, Ch  
*Pseudodrynaria coronans* (Wall.) Ching, V, Ep (*Aglaomorpha coronans* Cop.)  
*Pyrrhosia adnascens* (Sw.) Ching, V, Ep  
*Pyrrhosia flocculosa* Ching, SL, Ch  
*Pyrrhosia lingua* (Thunb.) Farwell, SL, Ch  
*Pyrrhosia tonkinensis* (Gies.) Ching, V, Ep

**PTERIDACEAE**

- Pteridium aquilinum* Kuhn, NL, Ch  
*Pteris cadieri* Christ, NL, H  
*Pteris dissitifolia* Bak., NL, H (*P. semipinnata* L. var. *dissitifolia* Tard.-Blot & C. Chr.)  
*Pteris ensiformis* Burm., SL, H  
*Pteris fenotii* Christ, SL, H  
*Pteris grevilleana* Wall., SL, H

- Pteris kbasyana* Hier., V, H  
*Pteris longipes* D. Don, V, H  
*Pteris oshimensis* Hier., V, H  
*Pteris semipinnata* L., V, H

## SALVINIACEAE

- Salvinia cucullata* Hoffm., NL, Th  
*Salvinia natans* (L.) All., NL, Th

## SCHIZAEACEAE

- Lygodium conforme* C. Chr., V, Cr  
*Lygodium flexuosum* (L.) Sw., NL, Cr  
*Lygodium flexuosum* (L.) Sw. var. *alata* Clarke,  
 NL, Cr  
*Lygodium japonicum* (Thunb.) Sw., NL, Cr  
*Lygodium microstachyum* Desv., NL, Cr  
*Lygodium polystachyum* Wall., NL, Cr  
*Lygodium scandens* (L.) Sw., NL, Cr  
*Lygodium subareolatum* Christ, NL, Ch

## THELYPTERIDACEAE

- Abacopteris cuspidatus* Ching, NL, H (*Cyclosorus  
 cuspidatus* Tard.-Blot)  
*Abacopteris simplex* (Hook.) Ching, NL, H  
 (*Cyclosorus triphyllus* Tard.-Blot var. *simplex*  
 Hook.)  
*Abacopteris triphylla* (Sw.) Ching, NL, H  
 (*Cyclosorus triphyllus* Tard.-Blot)  
*Abacopteris urophylla* Ching, NL, H (*Cyclosorus  
 urophylla* Tard.-Blot)  
*Cyclosorus balansae* C. Chr. & Tard.-Blot, V, H  
*Cyclosorus clavescens* Ching, V, H  
*Cyclosorus papilic* Tard.-Blot, V, H  
*Cyclosorus parasiticus* (L.) Farwell., V, H  
*Cyclosorus proliferus* Tard.-Blot, V, H  
*Cyclosorus sophoroides* Tard.-Blot, V, H  
*Cyclosorus truncatus* Ito, V, H  
*Cyclosorus unitus* Ching, V, H  
*Cyclosorus* sp1., V, H  
*Cyclosorus* sp2., V, H  
*Thelypteris singaiaensis* Ching, V, H  
*Thelypteris tonkinensis* Ching, V, H

## VITTARIACEAE

- Antrophyum callifolium* Blume, V, Ep  
*Antrophyum coriaceum* Wall., V, Ep  
*Antrophyum* sp., V, Ep  
*Vittaria elongata* Sw., V, Ep var. *merrillii* C. Chr.  
 & Tard.-Blot var. *zosterifolia* C. Chr. & Tard.-  
 Bot  
*Vittaria flexuosa* Fee, V, Ep  
*Vittaria hainmanensis* C. Chr., V, Ep

## WOODSIACEAE

- Callipteris esculenta* (Retz.) J. Sm., V, H  
*Diplaziopsis* sp., V, H  
*Diplazium donianum* (Mett.) Tard.-Blot, V, H

- Diplazium maximum* C. Chr., V, Ch  
*Diplazium pinnatifido-pinnatum* Moore, V, H  
*Diplazium* sp., V, H

## PINOPHYTA

## CYCADACEAE

- Cycas balansae* Warb., SL, Na

## GNETACEAE

- Gnetum montanum* Mgf., SL, Lp

## PODOCARPACEAE

- Podocarpus fleuryi* Hickel, SL, MM

## MAGNOLIOPHYTA

## MAGNOLIOPSIDA

## ACANTHACEAE

- Barleria lupulina* Lindl.-Gaidk., V, Na  
*Codonacanthus pauciflorus* (Nees) Nees, V, Ch  
*Dicliptera chinensis* (L.) Nees, V, Th  
*Eranthemum nervosum* Roem., V, Ch  
*Hygrophila angustifolia* R. Br., V, Ch  
*Hygrophila plomoides* Nees, V, Ch  
*Justicia equitans* R. Ben., V, Ch  
*Justicia gendarusa* R. Ben., NL, Na  
*Justicia paupercula* R. Ben., NL, Na  
*Justicia procumbens* L., NL, Ch  
*Justicia vagabunda* R. Ben., V, Ch  
*Justicia ventricosa* Wall., V, Na  
*Justicia* sp1., V, Ch  
*Justicia* sp2., V, Ch  
*Justicia* sp3., V, Na  
*Peristrophe roxburghiana* (Schult.) Brem., NL,  
 Ch (*P. tinctoria* Nees)  
*Phlogacanthus colaniae* R. Ben., NL, Na  
*Phlogacanthus curviflorus* Nees, V, Na  
*Phlogacanthus* sp., V, Na  
*Pseuderanthemum crenulatum* Lindl., V, Na  
*Pseuderanthemum palatiferum* Radlk., V, Na  
*Pseuderanthemum poilanei* R. Ben., V, Na  
*Pseuderanthemum tonkinensis* R. Ben., V, Na  
*Rhinacanthus calcaratus* Nees, V, Na  
*Rhinacanthus communis* Nees, NL, Na  
*Ruellia flagelliformis* Roxb., NL, H  
*Ruellia repens* L., V, Ch  
*Rungia tonkinensis* R. Ben., V, Ch  
*Rungia* sp., V, Ch  
*Sphinetacanthus* sp., V, Na  
*Strobilanthes acrocephalus* T. Anders., V, H  
*Strobilanthes brunnescens* R. Ben., V, Na  
*Strobilanthes dalziellii* (Smith.) R. Ben. var.  
*inaequalis* R. Ben., V, Na  
*Strobilanthes lilacinus* Clarke, V, Na  
*Strobilanthes multangurus* R. Ben., V, Na

- Thunbergia eberhardtii* R. Ben., V, Lp  
*Thunbergia grandiflora* Roxb. var. *cordifolia* R. Ben., V, Lp

## ACERACEAE

- Acer decandrum* Merr., V, MM  
*Acer oblongum* Wall., V, Mi  
*Acer tonkinensis* Lecomte, SL, Mi  
*Acer* sp., SL, Mi

## ACTINIDIACEAE

- Saurauia tristyla* DC., NL, Mi

## ALANGIACEAE

- Alangium barbatum* (R.Br.) Baill. var. *decipens* (Evrard) Tardieu-Blot, V, Mi (*A. decipiens* Evrard)  
*Alangium chinensis* (Lour.) Rehd., V, MM  
*Alangium kurzii* Craib, V, MM  
*Alangium salvifolium* (L.f.) Wang., SL, Lp

## AMARANTHACEAE

- Achyranthes aspera* L., V, H  
*Achyranthes bidentata* Bl., V, H  
*Alternanthera sessilis* (L.) R. Br. ex Roem., NL, Th  
*Amaranthus spinosus* L., NL, Th  
*Celosia argentea* L., NL, Th  
*Celosia argentea* L. var. *cristata* Moq., NL, Th (*Celosia cristata* Miq.)  
*Cyathula prostrata* (L.) Blume, NL, Ch  
*Deeringia amaranthoides* (Lam.) Merr., V, Lp

## ANACARDIACEAE

- Dracontomelum duperreanum* Pierre, V, MM  
*Drymicarpus racemosus* Hook., V, Mi  
*Mangifera foetida* Lour., V, MM  
*Pegia sarmentosa* (H. Lec.) Hand.-Maz., V, Lp (*Phlebochiton sarmentosum* H. Lec.)  
*Pistacia cucphuongensis* Dai, SUM, Mi  
*Pistacia weinmanifolia* Poiss. ex Franch. var. *simplex* Wu & Ifang., SUM, Mi  
*Rhus chinensis* Muller, V, Mi (*Rhus semialata* Murr.)  
*Choerospondias axillaris* (Roxb.) Burtt. & Hill, V, MM  
*Spondias lakonensis* Pierre, V, MM  
*Spondias pinnata* (L.f.) Kurz, V, MM (*S. mangifera* Will.)  
*Toxicodendron rhesoides* (Craib) Tard., V, Mi  
*Toxicodendron succedanea* (L.) Moldenke, V, Mi

## ANNONACEAE

- Alphonsea boniana* Finet & Gagnep., SL, MM  
*Alphonsea squamosa* Finet & Gagnep., SL, MM  
*Alphonsea tonkinensis* Aug. DC., SL, Mi  
*Alphonsea* sp., SL, Mi  
*Annona reticulata* L., NL, Mi  
*Annona squamosa* L., V, Mi

- Artabotrys vinbensis* Ast., NL, Lp  
*Dasymaschalon rostratum* Merr. & Chun. var. *glaucum* (Merr. & Chun) Ban, NL, Mi (*D. glaucum* Merr. & Chun)  
*Dasymaschalon* sp., NL, Mi  
*Desmos cambodius* (Pierre) Ast., NL, Mi  
*Desmos cochinchinensis* Lour., NL, Lp  
*Desmos dubius* Hook., NL, Lp  
*Desmos latifolium* Hook., NL, Lp  
*Goniothalamus tamirensis* Pierre, NL, Na  
*Fissistigma glaucescens* (Hance) Merr., NL, Lp  
*Fissistigma latifolium* Hook., NL, Lp  
*Fissistigma maclurei* Merr., NL, Lp  
*Fissistigma poilanei* (Ast.) Tsiang & Li, NL, Lp (*Melodorum poilanei* Ast.)  
*Fissistigma schefferi* Pierre, NL, Lp  
*Miliusa balansae* Finet & Gagnep., NL, Mi  
*Miliusa campanulata* Pierre, NL, Mi  
*Miliusa filipes* Merr., NL, Mi  
*Miliusa mollis* Pierre, NL, Mi  
*Mitrephora calcarea* Diels, V, MM  
*Mitrephora maingayi* Hook., V, Mi  
*Mitrephora pallens* Ast., V, Mi  
*Mitrephora trimetra* Craib, V, Mi  
*Polyalthia consanguinea* Merr., V, MM  
*Polyalthia laui* Merr., V, MM  
*Uvaria boniana* Finet & Gagnep., V, Lp  
*Uvaria cordata* (Dun.) Wall. ex Alston, V, Lp (*U. macrophylla* Roxb.)  
*Uvaria tonkinensis* Finet & Gagnep., V, Lp

## APIACEAE (UMBELLIFERAE)

- Centella asiatica* (L.) Urb., NL, H  
*Cnidium monnieri* (L.) Cuss., NL, Th  
*Eryngium foetidum* L., NL, H  
*Hydrocotyle javanica* Thunb., V, H  
*Hydrocotyle sibthorpioides* Lam., V, H

## APOCYNACEAE

- Alstonia scholaris* (L.) R. Br., SL, MM  
*Alyxia divaricata* Pitard, SL, Lp  
*Beaumontia grandiflora* Wall., SL, Lp  
*Chonemorpha eriostylis* Pitard var. *baviensis* Pitard, SL, Lp  
*Cirbera manghas* L., NL, MM  
*Ecdysanthera rosea* Hook., SUM, Lp  
*Ervatamia bonii* (Pitard) Pichon, V, Na (*Tabernaemontana bonii* Pitard)  
*Ervatamia bovina* (Lour.) Markgr., V, Na (*T. tonkinensis* Pitard, *T. repoensis* Pierre ex Pitard)  
*Holarrhena antidysenterica* (Roxb. & Flem.) A.DC., V, MM  
*Holarrhena similis* Craib., NL, Mi  
*Kitabalia macrophylla* (Pierre) Woodson, V, Mi  
*Kitabalia microphylla* (Pitard) Woodson, SL, Mi  
*Kopsia tonkinensis* Pitard, SL, Na  
*Melodinus annamensis* Pitard, SL, Lp

*Melodinus erianthus* Pitard, SL, Lp  
*Melodinus tonkinensis* Pitard, SL, Lp  
*Plumeria acutifolia* Poir., SUM, Mi  
*Parsonsia spiralis* Wall., SUM, Lp  
*Pottsia cantonensis* Hook., SL, Lp  
*Pottsia laxiflora* (Blume) Kuntze, SL, Lp  
*Rauwolfia cambodiana* Pierre ex Pitard, V, Mi  
*Rhynchodia capusii* Pierre, V, Lp  
*Spirolobium cambodianum* Baill., SUM, Lp  
*Strophanthus divaricatus* (Lour.) Hook. & Arn.,  
 NL, Mi (*S. divergens* Grah.)  
*Wrightia annamensis* Dub. & Eberh., NL, Mi  
*Wrightia laevis* Hook.f., SUM, Mi (*W. balansae*  
 Pitard)  
*Wrightia sikkimensis* Gamble, SUM, Mi (*W.*  
*stellata* Pitard)  
*Wrightia tomentosa* (Roxb.) Roem. & Schult.,  
 SUM, Mi  
*Wrightia reynandii* (Jum.) Pitard, SL, Lp

#### AQUIFOLIACEAE

*Ilex cinerea* Champ., V, Ch  
*Ilex memecylifolia* Champ., V, Mi  
*Ilex purpurea* Hassk. var. *nervosa* Loesn., V, MM  
*Ilex rotunda* Thunb., V, MM

#### ARALIACEAE

*Aralia armata* (Wall. ex G. Don) Seem., NL,  
 Lp  
*Aralia chinensis* L., NL, Mi  
*Aralia thomsonii* C.B. Clark var. *thomsonii*, SL,  
 Ch var. *petiolulosa* Ha  
*Aralia vietnamensis* Ha, SL, Na  
*Brassaiopsis glomerulata* (Blume) Regel., SL, Mi  
*Brassaiopsis bainla* (Ham.) Seem., SL, Na  
*Brassaiopsis varianalis* Shang, V, Na  
*Heteropanax fragran* (Roxb.) Seem., SL, MM  
*Macropanax oreophilus* Miq., SL, Mi  
*Schefflera globulifera* Grushv. & Skvorts., SL, Na  
*Schefflera glomerulata* Li, SL, Na  
*Schefflera leucantha* R. Vig., SL, Lp  
*Schefflera nitidifolia* Harm., SL, Na  
*Schefflera octophylla* (Lour.) Harm., NL, Mi  
*Schefflera petelotii* Merr., SL, Mi  
*Schefflera pes-avis* R. Vig., SUM, Na  
*Schefflera tonkinensis* R. Vig., SL, Na  
*Trevesia sphaerocarpa* Grushv., V, Mi

#### ARISTOLOCHIACEAE

*Aristolochia* aff. *dongnaiensis* Pierre, V, Lp  
*Aristolochia* sp1., V, Lp  
*Aristolochia* sp2., V, Lp  
*Aristolochia* sp3., V, Lp

#### ASCLEPIADACEAE

*Asclepias curassavica* L., NL, Ch  
*Congronema* sp., V, Lp  
*Cryptolepis buchananii* Roem. & Sch., V, Lp

*Cynanchum corymbosum* Wright., V, Lp  
*Dischidia acuminata* Cost., SL, Ep  
*Dischidia alboflava* Cost., SL, Ep  
*Dischidia* sp., SL, Ep  
*Dregea* sp., V, Ch  
*Gymnema latifolia* Wall., SL, Ch  
*Hoya bonii* Cost., SL, Ep  
*Hoya multiflora* Blume, SL, Ep  
*Hoya villosa* Cost., SL, Ep  
*Hoya* sp., SL, Ep  
*Marsdenia balansae* Cost., SL, Ch  
*Marsdenia tinctoria* Br., SL, Ch  
*Marsdenia urceolata* Decne., SL, Ch  
*Myriopteron* sp., SL, Ch  
*Oxystalma esculentum* Br., SL, Ch  
*Secamone bonii* Cost., SL, Ch  
*Streptocaulon griffithii* Hook., NL, Ch  
*Telosma cordata* (Burm. f.) Merr., NL, Ch  
*Toxocarpus griffithii* Decne, NL, Lp  
*Toxocarpus bossensii* Schlechter, NL, Lp  
*Toxocarpus villosus* Decne., NL, Lp  
*Toxocarpus villosus* Decne., var. *brevistylis* Cost.,  
 NL, Lp

#### ASTERACEAE

*Adenostemma viscosum* Forst., V, Ch  
*Ageratum conyzoides* L., V, Th  
*Artemisia carviflora* Wall., NL, Th  
*Artemisia vulgaris* L., NL, Ch  
*Aster trinervius* Roxb., NL, Th  
*Bidens bipinnata* L., NL, Th  
*Bidens pilosa* L., NL, Th  
*Blumea balsamifera* (L.) DC., V, Ch  
*Blumea glomerata* DC., NL, Ch  
*Blumea hieracifolia* DC., NL, Ch  
*Blumea honkongensis* Vaniot, NL, Ch  
*Blumea laciniata* (Roxb.) DC., NL, Ch  
*Blumea lanceolaria* (Roxb.) Druce, V, Ch (*B.*  
*mycriocephala* DC.)  
*Blumea procera* DC., NL, Ch  
*Blumea pubigera* Merr., NL, Ch (*B. chinensis* (L.)  
 DC.)  
*Blumea* sp., NL, Ch  
*Capasium abrotanoides* L., NL, Ch  
*Chromolaena nodiflorum* (DC.) Sch.-Bip., V, Ch  
*Chromolaena odoratum* (L.) King & Robinson,  
 NL, Ch  
*Chromolaena revesii* (Wall.) Sch.-Bip., V, Ch  
*Cnicus chinensis* Maxim., NL, Ch  
*Cnicus japonicus* Maxim., NL, Ch  
*Conyza viscidula* Wall., NL, Lp  
*Cotula anthemoides* Lour., NL, Ch  
*Crassocephalum crepidioides* (Benth.) S. Moore,  
 NL, Th  
*Crepis bonii* Gagnep., NL, Th  
*Crepis japonica* Benth., NL, Th

*Dicrocephala latifolia* (Lam.) DC., NL, Th  
*Eclipta alba* Hassk., V, Th  
*Elephantopus bodinieri* Gagnep., V, Ch  
*Elephantopus scaber* L., V, H  
*Emilia sonchifolia* DC., V, Th  
*Endydra fluctuans* Lour., NL, H  
*Erigeron canadense* L., NL, Th  
*Gnaphalium indicum* L., NL, Th  
*Gnaphalium luteo-album* L., NL, Th  
*Grangea maderaspatana* Poir., NL, Th  
*Gynura procumbens* (Lour.) Merr., NL, Cr (*G. sarmentosa* DC.)  
*Gynura pseudochina* DC., NL, Cr  
*Gynura* sp., NL, Cr  
*Hemistepta lyrata* Bunge, NL, Th  
*Inula lappa* DC., NL, Th  
*Lactuca indica* L., NL, Th  
*Parthenium hysterophorus* L., V, Th  
*Pluchea indica* Less., NL, H  
*Rhynchospermum verticillatum* Reinw., NL, Ch  
*Senecio scandens* D. Don, NL, Ch  
*Senecio* sp., V, Ch  
*Siegesbeckia orientalis* L., NL, Th  
*Sphaeranthus africanus* L., NL, Ch  
*Spilanthes acmella* L., NL, Th  
*Synedrella nodiflora* Gaertn., V, Th  
*Thespis tonkinensis* Gagnep., V, Th  
*Tridax procumbens* L., NL, Th  
*Vernonia andersoni* Clarke, NL, Ch  
*Vernonia arborea* Ham., NL, MM  
*Vernonia cinerea* Less., NL, Th  
*Vernonia divergens* Benth., NL, Ch  
*Vernonia patula* Merr., NL, Th  
*Vernonia thorelii* Gagnep., NL, Ch  
*Vernonia tonkinensis* Gagnep., NL, Ch  
*Xanthium strumarium* L., NL, Th  
*Wedelia calendulacea* Less., NL, Ch  
*Wedelia urticaefolia* DC., NL, Ch

**BALANOPHORACEAE**

*Balanophora fungosa* Forst. & Forst. f., V, Pp  
 (*B. pierrei* H. Lec.)  
*Balanophora* sp., V, Pp

**BALSAMINACEAE**

*Impatiens bonii* Hook.f., V, Ch  
*Impatiens chinensis* L., V, Th  
*Impatiens claviger* Hook.f., V, Ch  
*Impatiens* aff. *verrucifer* Hook.f., V, Ch

**BASELLACEAE**

*Basella rubra* L., NL, Ch

**BEGONIACEAE**

*Begonia* sp1., V, Ch  
*Begonia* sp2., V, Ch  
*Begonia* sp3., V, Ch

*Begonia* sp4., V, Ch

*Begonia* sp5., V, Ch

**BIGNONIACEAE**

*Fernandoa collignonii* (Dop) Steen., V, MM  
 (*Spathodeopsis collignonii* Dop)  
*Fernandoa* sp., V, MM  
*Markhamia stipulata* Soem., V, MM  
*Oroxylon indicum* (L.) Vent., V, MM  
*Radermachera boniana* Dop, V, MM  
*Radermachera ignea* (Kurz) Steen., V, MM  
 (*Mayodendron igneum* Kurz)

**BIXACEAE**

*Bixa orellana* L., NL, Mi

**BOMBACACEAE**

*Gossampinus malabaricum* (DC.) Merr., V, MM

**BORAGINACEAE**

*Bothriospermum tenellum* Fisch., V, Th  
*Cordia grandis* Roxb., NL, Mi  
*Carmone microphylla* (Lam.) Don, V, Na  
*Ehretia hanceana* Hemsl., NL, Lp  
*Ehretia acuminata* R. Br., V, Mi  
*Heliotropium indicum* L., NL, Th  
*Tournefortia sarmentosa* Lam., V, Lp

**BRASSICACEAE**

*Cardamine hirsuta* L. var. *silvatica* Link., NL, H  
*Rorippa indica* (L.) Hiern., NL, Cr  
*Rorippa nasturtium-aquaticum* (L.) Hayek., NL, Th

**BUDDLEJACEAE**

*Buddleja asiatica* Lour., NL, Na

**BURSERACEAE**

*Bursera tonkinensis* Guill., SL, MM  
*Canarium album* Raeusch., SL, MM  
*Canarium subulatum* Guill., SL, MM (*C. vittatistipulatum* Guill.)  
*Canarium tonkinense* Engl., SL, MM  
*Canarium tramdenum* Dai & Jakovl., SL, MM  
*Garuga pinnata* Roxb., SL, MM

**BUXACEAE**

*Buxus wallichiana* Baill., SUM, Ch

**CAMPANULACEAE**

*Codonopsis celebica* (Blume) Thuan, V, Cr  
*Codonopsis javanica* (Blume) Hook.f., V, Cr  
*Lobelia chinensis* Lour., V, Ch  
*Pratia begonifolia* Lindl., V, Cr

**CAPPARACEAE**

*Capparis viburnifolia* Gagnep., V, Lp  
*Capparis viminea* Hook., V, Na  
*Capparis* sp1., V, Lp  
*Capparis* sp2., V, Lp

- Capparis* sp3., V, Lp  
*Cleome gynandra* L., NL, Th  
*Cleome pentaphylla* DC., NL, Th  
*Cleome* sp., NL, Th  
*Crataeva magna* (Lour.) DC., V, MM  
*Stixis ovata* (Korth.) Hall. f., V, Lp
- CAPRIFOLIACEAE**
- Lonicera dasystyla* Rehder, V, Lp  
*Sambucus javanica* Reinw. ex Blume, V, Na  
*Viburnum lutescens* Blume, V, Mi (V. *colebrookianum* Wall.)  
*Viburnum* sp., V, Na
- CARDIOPTERIDACEAE**
- Cardiopteris lobata* Wall., V, Ch
- CARICACEAE**
- Carica papaya* L., V, PhH
- CARYOPHYLLACEAE**
- Drymaria cordata* Willd., V, Th  
*Malachium aquaticum* Fries, NL, Ch
- CECROPIACEAE**
- Poikilospermum suaveolens* (Blume) Merr., V, Lp  
 (Conocephalus *tonkinensis* O. Renner)
- CELASTRACEAE**
- Celastrus geinata* Loesw., V, Lp  
*Celastrus bindsii* Benth. & Hook., V, Lp  
*Celastrus orbiculata* Merr., V, Lp  
*Celastrus tonkinensis* Pitard, V, Lp  
*Celastrus* sp., V, Lp  
*Euonymus mitratus* Pierre, SUM, Mi  
*Euonymus* aff. *nitidus* Benth., SUM, Mi  
*Euonymus* sp., SUM, Mi  
*Glyptopetalum gracilipes* Pierre, SUM, Na  
*Glyptopetalum tonkinense* Pitard, SL, Na  
*Hippocratea indica* Willd., SL, Lp  
*Hippocratea* sp., SL, Lp
- CERATOPHYLLACEAE**
- Ceratophyllum demersum* L., NL, Cr
- CHENOPODIACEAE**
- Chenopodium album* L., NL, Th  
*Chenopodium ambrosioides* L., NL, Th
- CHLORANTHACEAE**
- Chloranthus brachystachys* Blume, V, Na  
*Sarcandra glabra* (Thunb.) Nakai, V, Na
- CLUSIACEAE**
- Callophyllum balansae* Pitard, SUM, MM  
*Callophyllum bonii* Pitard, SUM, MM  
*Callophyllum tonkinensis* Pitard, SL, Mi  
*Cratoxylon cochinchinensis* (Lour.) Blume, NL, Mi (Cratoxylon *polyanthum* Korth.)  
*Cratoxylon formosum* (Jack.) Dyer, NL, Mi  
 ssp. *prunifolium* (Kurz) Gagnep. (Cratoxylon *prunifolium* Dyer.)  
*Cratoxylon* sp., NL, Mi  
*Garcinia coua* Roxb., V, MM  
*Garcinia* sp1., V, MM  
*Garcinia* sp2., SL, Mi  
*Hypericum japonicum* Thunb., NL, Th  
*Hypericum sampsonii* Hance, NL, Ch
- COMBRETACEAE**
- Anogeissus acuminata* (DC.) Guill. & Perr., V, MM (Anogeissus *tonkinensis* Gagnep.)  
*Combretum latifolium* Blume, V, Lp (Combretum *extensum* Roxb.)  
*Combretum punctatum* Blume, V, Lp ssp. *squamosum* (G. Don) Exell. (Combretum *squamosum* Roxb.)  
*Quisqualis indica* L., V, Lp  
*Terminalia myriocarpa* Heurck & Muell., V, MM
- CONNARACEAE**
- Cnestis palala* (Lour.) Merr. ssp. *palala* Vidal, NL, Lp  
*Connarus paniculatus* Roxb. var. *paniculatus*, NL, Lp f. *tonkinensis* Vidal  
*Rourea minor* (Gaerth.) Leenh., NL, Lp ssp. *monadelphica* (Roxb.) Vidal
- CONVOLVULACEAE**
- Argyreia capitata* (Vahl) Choisy, NL, Lp  
*Argyreia obtusifolia* Lour., NL, Lp  
*Argyreia pierreana* Boiss., NL, Lp  
*Argyreia* sp., NL, Lp  
*Cuscuta hygrophilae* Pearson, NL, Pp  
*Erycibe boniana* Gagnep., V, Ch  
*Erycibe crassiuscula* Gagnep., NL, Ch  
*Evolvulus sublobata* (L.f.) Kuntze, NL, Th  
*Hexittia sublobata* (L.f.) Kuntze, NL, Th (H. *bicolor* Wight)  
*Ipomoea cairica* (L.) Sweet, NL, Lp (Ipomoea *pulchella* Roth)  
*Ipomoea pes-tigridis* L., NL, Lp  
*Ipomoea pileata* Roxb., NL, Lp  
*Ipomoea* sp1., NL, Lp  
*Ipomoea* sp2., NL, Lp  
*Jacquemontia paniculata* (Burm.f.) Hallier f., NL, Lp (Convolvulus *parviflorus* Vahl)  
*Lepistemon binectariferum* (Wall.) Kuntze, NL, Th  
*Merremia bederacea* (Burm.f.) Hallier f., NL, Lp (Ipomoea *chryseides* Ker-Gawl.)  
*Merremia petaloides* (Choisy) Burm.f., NL, Lp (Ipomoea *petaloidea* Choisy)  
*Merremia vitifolia* (Burm.f.) Hallier f., NL, Th (Ipomoea *vitifolia* Sweet)  
*Neuropeltis maingayi* Peter ex Oost., NL, Ch (Neuropeltis *racemosa* Wall.)



*Operculina turpethum* (L.) S.Manso, NL, Lp  
(*Ipomoea turpethum* R. Br.)

## CRASSULACEAE

*Bryophyllum calycinum* Salisb., SUM, Ch

## CUCURBITACEAE

*Gomphogyne bonii* Gagnep., V, Th  
*Gymnopetalum cochinchinensis* (Lour.) Kurz, V, Th  
*Gymnopetalum integrifolium* (Roxb.) Kurz, V, Th  
(*Gymnopetalum monoicum* Gagnep.)  
*Gynostemma pentaphylla* (Thunb.) Makino, V, Th  
(*Gynostemma pedata* Blume)  
*Gynostemma* sp., V, Th  
*Hodgsonia macrocarpa* (Blume) Cogn., V, Ch  
*Mukia maderaspatana* (L.) Roem., V, Th  
(*Melothria maderaspatana* Cogn.)  
*Momordica cochinchinensis* (Lour.) Spreng., V, Ch  
*Sobena heterophylla* Lour., V, Th (*Melothria heterophylla* Cogn.)  
*Thladiantha cordifolia* (Blume) Cogn., V, Ch  
(*Thladiantha calcarata* Clarke)  
*Thladiantha siamensis* Craib, V, Ch (*Momordica tonkinensis* Gagnep.)  
*Trichosanthes ovigera* Blume, V, Th (*T. himalensis* Clarke)  
*Trichosanthes lepinians* Cogn., V, Th  
*Trichosanthes rubriflos* Cayla, V, Th  
*Trichosanthes tricuspida* Blume, V, Th  
*Trichosanthes* sp., NL, Th  
*Zehneria indica* (Lour.) Kurandron, NL, Th  
(*Melothria indica* Lour.)  
*Zehneria maysorensis* (Wight & Arn.) Arn., NL, Th  
(*Melothria perpusilla* Cogn.)

## DATISCACEAE

*Tetrameles nudiflora* R.Br., V, MM

## DILLENIACEAE

*Dillenia aurea* Sw., V, MM  
*Dillenia pentagyna* Roxb., V, MM  
*Dillenia turbinata* Finet & Gagnep., V, MM (*D. heterosepala* Finet & Gagnep.)  
*Tetracera scandens* (L.) Merr., NL, Lp

## DIPTEROCARPACEAE

*Hopea bongaiensis* Tard. Blot, SUM, MM  
*Hopea umbellifera* Gagnep., V, MM  
*Shorea chinensis* (Wang Hsie) Zhu Hua, V, MM  
(*Shorea assamica* Dyer ssp. *assamica*)  
*Vatica cinerea* King, V, MM (*V. harmandiana* Pierre)

## EBENACEAE

*Diospyros bonii* H. Lec., SL, MM  
*Diospyros eriantha* Champ., SL, Mi  
*Diospyros mun* H. Lec., SUM, MM

*Diospyros pilosella* H. Lec., V, Mi  
*Diospyros* sp1., V, MM  
*Diospyros* sp2., V, MM  
*Diospyros* sp3., V, MM

## ELAEAGNACEAE

*Elaeagnus bonii* H. Lec., SL, Lp  
*Elaeagnus conferta* Roxb. var. *balansae* Serv., SL, Lp

## ELAEOCARPACEAE

*Elaeocarpus apiculatus* Gagnep., V, MM  
*Elaeocarpus decurvatus* Diels, V, MM  
*Elaeocarpus dubius* A. DC., V, MM  
*Elaeocarpus grandiflorus* Smith, SL, MM  
*Elaeocarpus laoticus* Gagnep., V, MM  
*Elaeocarpus stapfianus* Gagnep., V, MM  
*Elaeocarpus sylvestris* Poir., V, MM  
*Elaeocarpus viguieri* Gagnep., V, Mi  
*Sloanea sigun* K. Schum., V, MM

## ESCALLONIACEAE

*Itea chinensis* Gagnep., NL, MM  
*Itea cochinchinensis* (Pierre) Gagnep., NL, Mi

## EUPHORBIACEAE

*Acalypha australis* L., NL, Th  
*Acalypha lanceolata* Willd., NL, Mi  
*Acalypha welkesiana* Muell.-Arg., NL, Mi  
*Actephila excelsa* Muell.-Arg., V, Mi  
*Actephila subsessilis* Gagnep., V, Mi  
*Alchornea rugosa* Muell.-Arg., NL, Mi  
*Alchornea tiliifolia* Muell.-Arg., NL, Mi  
*Aleurites moluccana* (L.) Willd., V, MM  
*Antidesma ambigum* Pax & Hoffm., V, Mi  
*Antidesma fordii* Hemsl., V, MM (*Antidesma yunnanense* Pax & Hoffm.)  
*Antidesma ghaesambilla* Gaertn., V, Mi  
*Antidesma hainanensis* Merr., V, Mi  
*Antidesma montanum* Blume, V, Mi  
*Antidesma poilanei* Gagnep., V, Mi  
*Antidesma tonkinensis* Gagnep., V, Mi  
*Antidesma* sp1., V, Mi  
*Antidesma* sp2., V, Mi  
*Antidesma* sp3., V, Mi  
*Aporosa dioica* (Roxb.) Muell.-Arg., V, MM  
*Aporosa sphaerosperma* Gagnep., V, Mi  
*Aporosa* sp., V, Mi  
*Baccaurea ramiflora* Lour., V, MM (*Baccaurea sapida* Muell.-Arg.)  
*Baliospermum montanum* (Willd.) Muell. Arg., V, Na  
*Bischofia javanica* Blume, V, MM  
*Breynia augustifolia* Hook.f., NL, Na  
*Breynia fruticosa* Hook., NL, Na  
*Breynia indochinensis* Beille, NL, Na  
*Breynia* sp., NL, Na

- Bridella penangiana* Hook.f., V, MM  
*Bridelia monoica* (Lour.) Merr., V, Mi (*B. tomentosa* Blume)  
*Bridelia poilanei* Gagnep., V, Mi  
*Bridelia pierreii* Gagnep., V, Mi  
*Cenestemon tonkinensis* Gagnep., SL, Ch  
*Claoxylon indicum* (Reiwn. ex Blume) Hassk., V, Mi  
*Cleidion brevipetiolatum* Pax & Hoffm., SL, MM  
*Cleidion bracteosum* Gagnep., SL, Mi  
*Cleistanthus myrianthus* Kurz, SL, Mi  
*Croton bonianus* Gagnep., SUM, Mi  
*Croton eberhardtii* Gagnep., SUM, Mi  
*Croton joufra* Roxb., SL, MM  
*Croton latsonensis* Gagnep., SUM, Na  
*Croton tiglium* L., V, Mi  
*Croton* sp1., SL, Mi  
*Croton* sp2., SL, Mi  
*Croton* sp3., SL, Mi  
*Deutzianthus tonkinensis* Gagnep., NL, MM  
*Drypetes perreticula* Gagnep., SUM, MM  
*Drypetes salicifolia* Gagnep., SUM, MM  
*Endospermum chinense* Benth., V, MM  
*Euphorbia hirta* L., NL, Th  
*Euphorbia hypericifolia* L., NL, Th  
*Euphorbia pulcherrima* Willd., NL, Na  
*Euphorbia thymifolia* Burm., NL, Th  
*Euphorbia* sp1., NL, Ch  
*Euphorbia* sp2., NL, Ch  
*Excoecaria cochinchinensis* (Lour.) Kuntze, V, Na  
*Glochidion gamblei* Hook., V, Mi  
*Glochidion eriocarpum* Champ., NL, Na  
*Glochidion hirsutum* Muell.- Arg., NL, MM  
*Glochidion manogynum* Hook., NL, Mi  
*Glochidion zeylanicum* A. Juss., NL, Mi  
*Glochidion* sp., NL, Na  
*Hura crepitans* L., NL, MM  
*Jatropha curcas* L., NL, Na  
*Macaranga denticulata* (Blume) Muell.- Arg., NL, MM  
*Macaranga* sp., NL, Mi  
*Mallotus apelta* Muell.- Arg., NL, Mi  
*Mallotus barbatus* Muell.- Arg., NL, Mi  
*Mallotus cuneatus* Ridley, NL, Na  
*Mallotus hookerianus* Muell.- Arg., V, MM  
*Mallotus lanceolatus* (Gagnep.) Airy Shaw., SL, Na  
*Mallotus macrostachyus* (Miq.) Muell.- Arg., SL, Mi  
*Mallotus paniculatus* (Lam.) Muell.- Arg., NL, Mi (*M. cochinchinensis* Lour.)  
*Mallotus philippinensis* (Lam.) Muell.- Arg., SL, Mi  
*Mallotus* sp., V, Mi  
*Microdesmis casaeriaefolia* Planch., NL, MM  
*Phyllanthus emblica* L., V, Mi  
*Phyllanthus niruri* L., NL, Th  
*Phyllanthus poilanei* Beille., SL, Mi  
*Phyllanthus pseudoreticulatus* Thin, NL, Na  
*Phyllanthus reticulatus* Poir., NL, Lp  
*Phyllanthus simplex* Retz., NL, Th  
*Phyllanthus urinaria* L., NL, Th  
*Phyllanthus* sp1., NL, Th  
*Phyllanthus* sp2., NL, Th  
*Ricinus communis* L., NL, Mi  
*Sapium discolor* (Champ.) Muell.-Arg., NL, Mi  
*Sapium indicum* Willd., V, MM  
*Sapium sebiferum* Roxb., V, MM  
*Sauropus androgynus* (L.) Merr., SL, MM  
*Sauropus macranthus* Hassk., SL, Mi  
*Sauropus naichauensis* Thin. V. Na  
*Sauropus spectabilis* Miq., SL, Na  
*Sauropus racemosus* Beille., V, Mi  
*Strophoblachia glandulosa* Pax & Hoffm., SL, Mi  
*Sumbaviopsis albicans* J.J. Sm. var. *disperma* Gagnep., SL, Mi  
*Trigonostemon bonianus* Gagnep., NL, Ch  
*Trigonostemon eberhardtii* Gagnep., SL, Mi  
*Trigonostemon flavidus* Gagnep., SL, Mi  
*Trigonostemon stellaris* (Gagnep.) Airy Shaw, V, Mi  
*Vernicia montana* Lour., V, Mi
- FABACEAE**
- Acacia confusa* Merr., NL, MM  
*Acacia intsia* (L.) Willd., NL, Lp  
*Acacia pennata* (L.) Willd., V, Lp  
*Adenantha pavonina* L., V, MM (*A. microsperma* Teysm. & Binn.)  
*Aeschynomone indica* L., NL, H  
*Albizia kalkora* Prain, NL, Mi  
*Albizia lebbek* (L.) Benth., SUM, MM  
*Albizia lucidior* (Steud.) I. Nielsen, V, MM (*A. lucida* Benth.)  
*Albizia* sp1., V, MM  
*Albizia* sp2., V, MM  
*Albizia* sp3., V, Mi  
*Alysicarpus vaginalis* (L.) DC., SUM, Ch ssp. *cucphuongensis* Khoi  
*Archidendron clypearia* (Jacks.) I. Nielsen, SL, MM (*Pithecellobium clypearia* Benth.)  
*Archidendron* sp1., V, MM  
*Archidendron* sp2., V, Mi  
*Atylosia scarabaeoides* (L.) Benth., NL, Lp  
*Bauhinia championii* (Benth.) Benth., SL, Na (*B. lecomtei* Gagnep.)  
*Bauhinia touranensis* Gagnep., V, Lp  
*Bauhinia viridescens* Desv., SL, Na  
*Bauhinia* sp1., SL, Lp

- Bauhinia* sp2., SL, Lp  
*Bourgingia callicarpa* Champ., V, Lp  
*Cajanus cajan* (L.) Millsp., NL, Na (*C. indicus* Spreng.)  
*Caesalpinia culculata* Roxb., V, Lp (*Mezoneuron cucullatum* Wight. & Arn.)  
*Caesalpinia latisiliqua* (Cav.) Hattinko, V, Lp (*Mezoneuron balansae* Prain)  
*Caesalpinia minax* Hance, V, Lp  
*Caesalpinia nuga* Ait., SL, Lp  
*Caesalpinia sappan* L., V, MM  
*Canavalia cathartica* Du Petit-Thouars, V, Lp (*C. turgida* Grah. ex Gray)  
*Canavalia ensiformis* (L.) DC., V, Lp  
*Cassia hirsuta* L., NL, Th  
*Cassia mimosoides* L., NL, Ch  
*Cassia occidentalis* L., NL, Ch  
*Cassia tora* L., NL, Th  
*Crotalaria albida* Heyne, NL, H  
*Crotalaria ferruginea* Grah., NL, Ch  
*Crotalaria juncea* L., NL, Na  
*Crotalaria linifolia* L.f. var. *linifolia*, NL, Th var. *angustifolia* Gagnep.  
*Crotalaria sessiliflora* L., NL, Ch  
*Crotalaria striata* DC., NL, Na (*M. mucronata* Desv.)  
*Crotalaria verrucosa* L., NL, Na  
*Dalbergia balansae* Prain, V, MM  
*Dalbergia lanceolaria* L.f., V, MM  
*Dalbergia rimosa* Roxb., V, Na  
*Delonix regia* Raf., NL, MM (*Poinciana regia* Bojer ex DC.)  
*Derris albo-rubra* Hemsley, SL, Na  
*Derris elleptica* Benth., SL, Lp  
*Derris tonkinensis* Gagnep., SL, Lp  
*Derris wallichiana* Prain, SL, Lp  
*Derris* sp., SL, Na  
*Desmodium cephalotes* Wall., NL, Na  
*Desmodium elegans* (Lour.) Benth., NL, Ch  
*Desmodium gangeticum* (Lour.) DC., NL, Ch  
*Desmodium gyrans* DC., NL, Ch  
*Desmodium gyroides* DC., NL, Na  
*Desmodium heterocarpum* (L.) DC., NL, Lp  
*Desmodium heterophyllum* (Willd.) DC., NL, Ch  
*Desmodium lasiocarpum* (P. Beauv.) DC., NL, Ch  
*Desmodium latifolium* DC. var. *virgatum* Miq., NL, Na  
*Desmodium laxiflorum* DC., NL, Ch  
*Desmodium polycarpum* (Lam.) DC., NL, Ch  
*Desmodium pulchellum* (L.) Benth., NL, Ch  
*Desmodium triquetrum* (L.) DC., NL, Ch  
*Dolichos* sp., NL, Th  
*Entada phaseoloides* (L.) Merr., V, Lp (*E. tonkinensis* Gagnep.)  
*Erythrina stricta* Roxb., V, MM  
*Erythrophloeum fordii* Oliv., V, MM  
*Flemingia congesta* Roxb., NL, Na  
*Galactia longipes* Gagnep., V, Lp (*G. mouretii* Gagnep.)  
*Gleditschia pachycarpa* Bala, V, MM  
*Indigofera galeoides* DC., V, Na  
*Indigofera hirsuta* L., V, Ch  
*Indigofera trifoliata* L., NL, Ch  
*Indigofera* sp., NL, Mi  
*Lepedeza sericea* Miq., SUM, Na  
*Leucaena leucocephala* (Lam.) De Wit, NL, Mi (*L. glauca* (Willd.) Benth.)  
*Milletia* aff. *dielsiana* Harms ex Diels, SL, Lp  
*Milletia ichthyochtona* Drake, SL, MM  
*Milletia pachyloba* Drake, NL, Lp  
*Milletia pulchra* Kurz, NL, Na  
*Milletia* sp1., V, MM  
*Milletia* sp2., V, Mi  
*Milletia* sp3., V, Lp  
*Mimosa invisa* Mart.ex Colla, V, Ch  
*Mimosa pudica* L., V, Ch  
*Mucuna hainanensis* Hayta, V, Lp  
*Ormosia hainanensis* Gagnep., SL, MM  
*Ormosia tonkinensis* Gagnep., SL, Mi  
*Peltophorum dasyrrhachis* (Miq.) Kurz var. *tonkinensis* (Pierre) K. & S.S. Larsen, V, MM (*P. tonkinense* Gagnep.)  
*Pterolobium microphyllum* Miq., V, Lp (*P. platypterum* Gagnep.)  
*Saraca dives* Pierre, V, Mi  
*Psophocarpus tetragonolobus* (L.) DC., NL, Th  
*Pueraria thomsonii* Benth., NL, Lp  
*Pueraria montana* (Lour.) Merr., NL, Lp (*P. tonkinensis* Gagnep.)  
*Sesbania* sp., NL, Ch  
*Smitia sensitiva* Ait., V, Ch  
*Tephrosia* aff. *kerrii* Drumm. & Craib, NL, Na  
*Tephrosia purpurea* (L.) Pers, NL, Ch  
*Uraria crinita* (L.) Desv., NL, Ch  
*Uraria lagopoides* DC., NL, H  
*Uraria macrostachya* Wall., NL, Ch  
*Uraria rufescens* (DC.) Schindl., NL, H (*U. hamosa* Wall.)  
*Vigna radiata* (L.) Wilczek var. *sublobata* (Roxb.) Verdcourt, NL, Lp (*Phaseolus sublobatus* Roxb.)  
*Vigna umbellata* (Thunb.) Ohwi & Ohashi, NL, Lp (*Phaseolus calcaratus* Roxb.)  
*Vigna* sp1., NL, Lp  
*Vigna* sp2., NL, Lp

## FAGACEAE

- Castanopsis indica* A.DC., V, MM  
*Castanopsis lecomtei* Hickel & A. Camus, V, MM  
*Castanopsis symmetriculata* Luong, SL, MM

- Lithocarpus areca* Hickel & A. Camus, SL, MM  
*Lithocarpus corneus* (Lour.) Rehd., V, MM  
*Lithocarpus pseudosundaica* Hickel & A. Camus, NL, Mi  
*Lithocarpus* aff. *stenopus* Hickel & A. Camus, NL, MM  
*Lithocarpus* aff. *thomsonii* Hickel & A. Camus, SL, MM  
*Lithocarpus* sp1., SL, MM  
*Lithocarpus* sp2., SUM, MM  
*Quercus* aff. *dussaudii* Hickel & A. Camus, SUM, MM  
*Quercus* sp., SUM, Mi
- FLACOURTIACEAE**  
*Casearia sequilateralis* Merr., V, Mi  
*Flacourtia balansae* Gagnep., V, Mi  
*Flacourtia ratmonchii* L'Herit., V, MM  
*Homanlium paniculiflorum* How & Ko, V, Mi  
*Homalium* sp., V, Mi  
*Hydnocarpus hainanensis* (Merr.) Sleum., V, MM  
*Hydnocarpus kurzii* (King) Warb., V, MM ssp. *australis* Sleum.  
*Taractogenos* sp., V, MM  
*Scolopia chinensis* Clos., V, Na
- GENTIANACEAE**  
*Exacum tetragonum* Roxb., V, Ch  
*Fagraea ceilanica* Thunb., V, Lp (*F. obovata* Wall.)
- GESNERIACEAE**  
*Boea martini* Lévl., SL, Na  
*Boea umbellata* Drake, SL, Ch  
*Chirita balansae* Drake, SL, H  
*Chirita hamoea* R. Br., SL, Ch  
*Chlamydoboea sinensis* (Oliv.) Stapf, var. *macrophylla*, SL, Ch  
*Didymecarpus* sp., V, Ch  
*Didissandra aspera* Drake, V, Na  
*Didissandra* sp., V, Ch  
*Rhynchothecum parviflorum* Blume, V, Ch
- HAMAMELIDACEAE**  
*Liquidambar formosana* Hance, NL, MM
- HERNANDIACEAE**  
*Illigera celebica* Miq., V, Lp (*I. platyandra* Dunn.)  
*Illigera rhodantha* Hance var. *rhodantha*, V, Lp var. *dunniana* (Levl.) Kubitzki (*Illigera glandulosa* Gagnep.)
- HIPPOCASTANACEAE**  
*Aesculus assamica* F. Griff., NL, Mi
- HYDRANGEACEAE**  
*Dicbroa hirsuta* Gagnep., V, Na
- HYDROPHYLLACEAE**  
*Hydrolea zeylanica* Vahl, V, Th
- ICACINACEAE**  
*Gomphandra oppsitifolia* Pierre, V, Na  
*Iodes cirrhosa* Turcz, V, H (*I. ovalis* Blume)  
*Iodes* sp., V, H  
*Nothapodytes pittosporoides* (Oliv.) Sleum., V, Mi  
*Nothapodytes* sp., V, Mi
- ILLICIACEAE**  
*Illicium griffithii* Hook. var. *cambodianum* Finet & Gagnep., SUM, MM
- JUGLANDACEAE**  
*Annamocarya chinensis* Dode, V, MM  
*Engelhardtia spicata* Blume, V, MM  
*Platycarya strobilacea* Sieb. & Zucc., SUM, MM  
*Pterocarya tonkinensis* Dode, V, MM
- LAMIACEAE**  
*Ajuga decumbens* Thunb., V, Ch  
*Alisomoles indica* (L.) Kuntze, V, Th (*A. ovata* R. Br.)  
*Gomphostemma leptodon* Dunn, V, Ch  
*Gomphostemma lucidum* Wall. & Benth., V, Ch  
*Leonurus artemisia* (Lour.) S.Y.Hu, NL, Ch (*L. heterophyllus* Sw.)  
*Leucas mollissima* Wall. ex Benth., V, Ch  
*Leucas zeylanica* (L.) R. Br., NL, Ch  
*Mentha arvensis* L., NL, H  
*Mentha aquatica* L., NL, H  
*Microtoena insuavis* (Hance) Dunn, NL, Th  
*Mosla cavaleriei* Levl., V, Th  
*Ocimum basilicum* L., NL, Th  
*Ocimum sanctum* L., NL, Th  
*Orthosiphon thymiflorus* (Roth) Slecsiin, V, Ch (*O. tomentosus* Benth.)  
*Paraphlomis javanica* (Blume) Prain, V, Ch (*P. rugosa* Prain)  
*Perilla frutescens* (L.) Britt., NL, Th  
*Plectranthus ternifolius* D. Don, NL, Na  
*Pogostemon auricularius* (L.) Hassk., V, Th  
*Salvia plebeia* R. Br., V, Th  
*Salvia splendens* Ker. Gowl., NL, Th  
*Stachys oblongifolia* Wall. ex Benth., V, H  
*Teucrium viscidum* Blume, V, H (*T. stoloniferum* Roxb.)
- LAURACEAE**  
*Actinodaphne pilosa* (Lour.) Merr., V, MM  
*Beilschmiedia* aff. *erythroploia* Hayata, V, MM  
*Beilschmiedia fordii* Dunn., V, MM  
*Beilschmiedia ferruginea* H. Liu, V, MM  
*Beilschmiedia laevis* Allen, V, MM  
*Beilschmiedia obovalifolia* Lecomte, V, MM  
*Beilschmiedia robusta* Allen, V, MM

*Beilschmiedia roxburghiana* Nees, V, MM  
*Beilschmiedia* sp1., SL, MM  
*Beilschmiedia* sp2., V, MM  
*Beilschmiedia* sp3., V, MM  
*Beilschmiedia* sp4., V, MM  
*Caryodaphnopsis* aff. *baviensis* (Lecomte) Airy Shaw, V, MM (*Nothaphoebe* aff. *baviensis* Lecomte)  
*Caryodaphnopsis tonkinensis* (Lecomte) Airy Shaw, V, MM (*Nothaphoebe tonkinensis* Lecomte)  
*Cassytha filiformis* L., NL, Pp  
*Cinnamomum balansae* Lecomte, V, MM  
*Cinnamomum bejolghota* (Buch.-Ham.) Sweet, V, MM (*C. obtusifolium* Nees)  
*Cinnamomum bonii* Lecomte, V, MM  
*Cinnamomum cambodianum* Lecomte, SL, MM  
*Cinnamomum camphora* Sieb., NL, MM  
*Cinnamomum curvifolium* (Lour.) Kosterm., V, MM (*C. albiflorum* Nees)  
*Cinnamomum polyadelphum* (Lour.) Kosterm., V, MM (*C. litseaefolium* Thw.)  
*Cinnamomum tetragonum* A. Chev., V, MM  
*Cinnamomum validinerve* Hance, V, MM  
*Cryptocarya impressa* Miq., V, MM  
*Cryptocarya lenticellata* Lecomte, V, MM  
*Cryptocarya oblongifolia* Blume, V, MM  
*Cryptocarya* sp., V, MM  
*Lindera balansae* Lecomte, V, MM  
*Lindera polyantha* Boerl., V, MM  
*Lindera tonkinensis* Lecomte, V, Mi  
*Litsea baviensis* Lecomte, V, Na  
*Litsea cubeba* Pers., SL, Mi  
*Litsea glutinosa* (Lour.) L. Rob., SL, Mi  
*Litsea hefferi* Hook., V, Na  
*Litsea mollifolia* Chun., V, Mi (*L. mollis* Hemsl.)  
*Litsea monopetala* Roxb., V, MM  
*Litsea panamonja* (Nees) Hook.f., V, Mi  
*Litsea rotundifolia* Hemsl., V, Na  
*Litsea umbellata* (Lour.) Merr., V, Mi (*L. amara* Blume)  
*Litsea verticillata* Hance, V, MM  
*Litsea* sp1., V, Mi  
*Litsea* sp2., V, Na  
*Machilus bombycina* King, V, Mi  
*Machilus hainanensis* Merr., V, MM  
*Machilus odoratissima* Nees, V, MM  
*Machilus platycarpa* Chun, V, Mi  
*Machilus thunbergii* Sieb. & Zucc., V, MM  
*Machilus* sp., V, MM  
*Neocinnamomum caudatum* (Nees), V, Mi (*N. poilanei* H.Liu)  
*Neocinnamomum delavayi* (Lecomte) H.Liu, V, Na (*N. parvifolium* (Lecomte) H.Liu)  
*Neocinnamomum lecomtei* H.Liu, V, Mi

*Neolitsea zeylanica* Merr., V, Mi  
*Phoebe tavogana* (Meissn.) Hook.f., V, MM (*P. cuneata* Blume)

## LECYTHIDACEAE

*Barringtonia eberhardtii* Gagnep., V, MM  
*Barringtonia edaphocarpa* Gagnep., V, Mi

## LEEACEAE

*Leea guineensis* G. Don, V, Na (*L. acuminata* Wall.)

## LINACEAE

*Tirpitzia chinensis* (Hemsl.) Hall., SL, Mi

## LOGANIACEAE

*Strychnos wallichiana* Steud.ex DC., V, Lp (*S. gaulthierana* Pierre)

## LORANTHACEAE

*Elytranthe ampullacea* G. Don, V, Pp  
*Loranthus adpressus* Lecomte, V, Pp  
*Loranthus pentandrus* L., V, Pp  
*Loranthus ferrugineus* Roxb., V, Pp  
*Loranthus scurrulla* L., V, Pp  
*Taxillus chinensis* (DC.) Dans., V, Pp  
*Taxillus estipitatus* (Stapf.) Dans., V, Pp

## LYTHRACEAE

*Ammaria auriculata* Willd. var. *arenaria* Kochne, NL, Ch  
*Ammaria baccifera* L., NL, Th  
*Duabanga grandiflora* (Roxb. ex DC.) Walp., V, MM  
*Lagerstroemia corniculata* Gagnep., SL, Mi  
*Rotala rotundifolia* Kochne., NL, H

## MAGNOLIACEAE

*Magnolia eriostepta* Dandy, SL, Mi  
*Manglietia conifera* Dandy, V, MM  
*Michelia balansae* Dandy, V, MM  
*Michelia chapaensis* Dandy, SL, Mi

## MALPIGHIACEAE

*Aspidopteria* aff. *glabrifolia* J. Ar., V, Lp  
*Aspidopteria obcordata* Hemsl., V, Lp  
*Hiptage boniana* P. Dop, V, Lp  
*Hiptage benghalensis* (L.) Kurz, V, Lp  
*Hiptage* sp., V, Lp

## MALVACEAE

*Abutilon indicum* G. Don, NL, Ch  
*Hibiscus abelmoschus* L., V, Na  
*Hibiscus mutabilis* L., NL, Na  
*Hibiscus rosa-sinensis* L., NL, Mi  
*Kydia calycina* Roxb., V, MM  
*Sida acuta* Burm., V, Na  
*Sida rhombifolia* L., V, Na  
*Urena lobata* L., V, Na

**MELASTOMATACEAE**

- Blastus cochinchinensis* Lour., V, Na  
*Blastus multiflorus* (Cogn.) Guill., V, Na  
*Melastoma candidum* D. Don, NL, Na  
*Melastoma normale* D. Don, NL, Ch  
*Melastoma sanguineum* Sims, V, Na (*M. decemfidum* Roxb.)  
*Melastoma trungii* Pocs. & Tiep, V, Na  
*Osbeckia truncata* D. Don, V, H

**MELIACEAE**

- Aglaia gigantea* (Pierre) Pellegr., V, MM  
*Aglaia odorata* Lour., V, Mi  
*Aglaia tetrapetala* Pierre, V, MM  
*Amoora aphanamixis* Roem. & Schult., V, Mi  
 (*Aglaia aphanamixis* Pellegr. var. *frutescens* C. DC.)  
*Amoora* aff. *cucullata* Roxb., V, MM  
*Amoora* sp., V, Mi  
*Chisocheton globosus* Pierre, V, MM  
*Chisocheton paniculatus* Hiern., V, MM  
*Chukrasia tabularis* A. Juss., V, MM  
*Cipadessa fruticosa* Blume, V, Mi  
*Dysoxylon binectariferum* Hook.f., V, MM  
*Dysoxylon cauliflorum* Hiern., V, MM  
*Dysoxylon* aff. *cochinchinensis* Pierre, V, MM  
*Heynia trijuga* Roxb., V, MM  
*Melia azedarach* L., V, MM  
*Toona sureni* (Blume) Moore, V, MM  
*Walsura bonii* Pellegr., V, MM

**MENISPERMACEAE**

- Cissampelos pareira* L., V, Lp  
*Cyclea tonkinensis* Gagnep., V, Lp  
*Cocculus laurifolius* DC., V, Ch  
*Diploclisia macrocarpa* Miers, V, Lp  
*Fibraurea recisa* Pierre, V, Lp  
*Parabaena sagittata* Miers, V, Ch  
*Tinomiscum tonkinensis* Gagnep., V, Lp  
*Stephania bernandifolia* Spreng., V, Lp  
*Stephania rotunda* Lour., SL, Cr

**MORACEAE**

- Antiaris toxicaria* Leschen., V, MM  
*Artocarpus heterophyllus* Lam., NL, MM  
*Artocarpus parva* Gagnep., V, Mi  
*Artocarpus petelotii* Gagnep., V, MM  
*Artocarpus tonkinensis* A. Chev., V, MM  
*Broussonetia kazinoki* Sieb., V, Ch  
*Broussonetia papyrifera* Vent., V, Mi  
*Maclura cochinchinensis* (Lour.) Corner, V, Lp  
 (*Cudrania cochinchinensis* Lour., *C. javanensis* Trecul)  
*Dimerocarpus brennieri* Gagnep., V, MM  
*Ficus altissima* Blume, SL, MM  
*Ficus annulata* Blume, SL, MM

- Ficus auricula* Lour., V, Mi (*F. roxburghii* Wall.)  
*Ficus benjamina* L., SL, MM  
*Ficus callosa* Willd., SL, MM  
*Ficus callophyloides* Blume, V, MM  
*Ficus capillipes* Gagnep., V, Mi  
*Ficus chaffansjoni* Lev., V, Lp  
*Ficus cunia* Hamilt., V, Mi  
*Ficus curtipes* Corner., V, MM  
*Ficus dumosa* King, V, Na  
*Ficus fistulosa* Reinw. ex Blume, V, MM (*F. barlandii* Benth.)  
*Ficus fulva* Reinw. ex Blume var. *fulva*, V, Mi  
 var. *minor* King.  
*Ficus gibbosa* Blume, V, MM  
*Ficus glaberrima* Blume, V, Mi  
*Ficus glandulifera* Wall., V, Mi  
*Ficus heterophylla* L., V, Na  
*Ficus hirta* Vahl, NL, Na  
*Ficus hispida* L., V, Mi  
*Ficus lacor* Hamilt., V, MM (*F. infectoria* Roxb.)  
*Ficus laevis* Blume, V, Lp  
*Ficus lamponga* Miq., V, Mi (*F. balansae* Gagnep.)  
*Ficus leckensis* Drake, V, Na  
*Ficus nervosa* Heyne, V, MM  
*Ficus obscura* Blume, V, Mi  
*Ficus pilosa* Reinw., V, MM  
*Ficus pumila* L., V, Lp  
*Ficus racemosa* L., V, MM (*F. glomerata* L. var. *chittagonta* King)  
*Ficus religiosa* L., NL, MM  
*Ficus retusa* L., V, MM  
*Ficus rostrata* Lam., V, Na  
*Ficus sagittata* Vahl, V, Lp (*F. ramentacea* Roxb.)  
*Ficus sikkimensis* Miq., V, Lp  
*Ficus sum* Gagnep., V, Mi  
*Ficus superba* Miq., V, MM  
*Ficus variegata* Blume, V, Mi  
*Ficus* sp1., V, Lp  
*Ficus* sp2., V, MM  
*Malaisia scandens* (Lour.) Planch., V, Ch (*M. tortuosa* Blume var. *scandens* Bur.)  
*Morus alba* L., NL, Mi  
*Streblus asper* Lour., NL, Mi  
*Streblus ilicifolia* (Kurz) Corner, SL, Na  
 (*Txotrophis ilicifolia* (Kurz) Vidal)  
*Streblus taxoides* (Heyne) Kurz, SL, Na  
 (*Phyllocllamys tridentata* Gagnep.)  
*Taxotrophis macrophylla* (Blume) Merr., SL, Mi  
*Streblus tonkinensis* (Eberh. & Dub.) Corner SL, Mi  
 (*Teonongia tonkinensis* Stapf.)

**MYRISTICACEAE**

- Horsfieldia prainii* Warbg., V, MM  
*Horsfieldia tonkinensis* Lecomte, V, MM

- Knema conferta* (King) Warbg., V, MM  
*Knema globularia* (Lam.) Warb., V, MM  
 (*K. corticosa* Lour.)

## MYRSINACEAE

- Ardisia maculosa* Mez, V, Na  
*Ardisia gigantifolia* Stapf., V, Na  
*Ardisia quinquegona* Blume, V, Na  
*Ardisia ramondiaeformis* Pitard, V, Na  
*Ardisia silvestri* Pitard, V, Na  
*Ardisia tonkinensis* A. DC., V, Na  
*Ardisia* sp1., V, Na  
*Ardisia* sp2., V, Na  
*Ardisia* sp3., V, Na  
*Ardisia* sp4., V, Na  
*Ardisia* sp5., V, Na  
*Ardisia* sp6., V, Na  
*Ardisia* sp7., V, Na  
*Ardisia* sp8., V, Na  
*Ardisia* sp9., V, Na  
*Embelia laeta* L., NL, Lp  
*Embelia oblongifolia* Hemsl., SL, Lp  
*Embelia ribes* Burm., NL, Lp  
*Embelia scandens* Mez, SUM, Lp  
*Embelia* sp1., V, Lp  
*Embelia* sp2., V, Lp  
*Maesa balansae* Mez, V, Na  
*Maesa indica* (Roxb.) A. DC., V, Na  
*Maesa japonica* (Thunb.) Mez, V, Na  
*Maesa striata* Mez var. *opaca* Pitard, V, Na  
*Masea tenera* Mez, V, Na  
*Maesa tomentella* Mez, V, Na  
*Maesa tonkinensis* Mez var. *tonkinensis*, V, Na  
 var. *bonii* Pitard

## MYRTACEAE

- Decaspermum paniculatum* Kurz, V, Mi  
*Psidium guajava* L., V, Mi  
*Rhodomyrtus tomentosa* Wight, NL, Na  
*Syzygium baviense* (Gagnep.) Merr. & Perry, V,  
 Mi (*Eugenia baviensis* Gagnep.)  
*Syzygium chlorantha* (Duthie) Merr. & Perry, V,  
 Mi (*Eugenia chlorantha* Duthie)  
*Syzygium eburneum* (Gagnep.) Merr. & Perry,  
 V, Na (*Eugenia eburnea* Gagnep., *Eugenia*  
*ebunianum* Merr. & Perry)  
*Syzygium jambos* (L.) Ast., NL, Mi (*Eugenia*  
*jambos* L.)  
*Syzygium malayanum* (Gagnep.) Merr. & Perry,  
 V, Mi (*Eugenia malayana* Gagnep.)  
*Syzygium mekongense* (Gagnep.) Merr. & Perry,  
 V, Mi (*Eugenia mekongense* Gagnep.)  
*Syzygium samarangense* (Blume) Merr. & Perry,  
 NL, Mi (*Syzygium javanica* Lam.)  
*Syzygium ternifolium* (Roxb.) Merr. & Perry, V,  
 Mi (*Syzygium formosa* Wall. var. *ternifolia*  
 Gagnep.)

- Syzygium tonkinense* (Gagnep.) Merr. & Perry,  
 V, MM (*Eugenia tonkinensis* Gagnep.)  
*Syzygium zimmermannii* (Warb.) Merr. & Perry,  
 V, Na (*Eugenia jimerani* Warb.)  
*Syzygium* sp1., V, MM  
*Syzygium* sp2., V, MM  
*Syzygium* sp3., V, Mi

## OLACACEAE

- Erythropalum scandens* Blume, V, Lp

## OLEACEAE

- Jasminum adenophyllum* Wall., V, Lp  
*Jasminum lanceolarium* Roxb., SUM, Lp  
*Jasminum longisetum* Gagnep., V, Lp  
*Jasminum microcalyx* Hance, V, Lp  
*Jasminum subtriplinerve* Blume, V, Na  
*Jasminum undulatum* Ker-Gawl., V, Lp

## ONAGRACEAE

- Ludwigia adnascens* (L.) Hara, NL, H (*Jussiaea*  
*repens* L.)  
*Ludwigia prostrata* Roxb., NL, H (*Jussiaea*  
*prostrata* (Roxb.) Lév.  
*Ludwigia octovalis* (Jacq.) Raven ssp. *sessiliflora*  
 (Michx.) Raven., NL, Th (*Jussiaea suffruticosa*  
 L.)

## OPILIACEAE

- Lepionurus sylvestris* Blume, SL, Na  
*Meliantha suavis* Pierre, SL, Mi

## OXALIDACEAE

- Averrhoa carambola* L., NL, Mi  
*Biophytum sensitivum* DC., NL, H  
*Oxalis corniculata* L., NL, H

## PASSIFLORACEAE

- Adania chevalieri* Gagnep., V, Ch  
*Passiflora foetida* L., NL, Ch  
*Passiflora siamica* Craib, V, Ch (*P. octandra*  
 Gagnep.)

## PEDALIACEAE

- Sesamum orientale* L., NL, Th

## PENTHORACEAE

- Penthorum sedoides* L., NL, H

## PIPERACEAE

- Peperomia leptostachya* Hook. & Arn., V, H  
*Piper betle* L., NL, Ch  
*Piper bonii* DC., V, Ch  
*Piper gymnostachyum* DC., V, Ch  
*Piper hainanense* Hemsl., V, H  
*Piper lappaceum* DC., V, Ch  
*Piper lolot* DC., V, Ch  
*Piper longum* L., V, Ch  
*Piper pendulipicum* C. DC., V, Ch  
*Piper retrofractum* Vahl, V, Ch

**PITTOSPORACEAE**

*Pittosporum tonkinensis* Gagnep., V, Mi

**PLANTAGINACEAE**

*Plantago major* L., NL, Cr

**PLUMBAGINACEAE**

*Plumbago zeylanica* L., NL, Ch

**POLYGALACEAE**

*Polygala glomerata* Lour., V, Na

*Polygala tonkinensis* Chodat, V, Na

**POLYGONACEAE**

*Fagopyrum cymosum* (Trev.) Meisn., V, Ch

*Polygonum barbatum* L., NL, H

*Polygonum chinense* L., NL, H

*Polygonum donii* Meisn., V, Th

*Polygonum flaccidum* Roxb., V, H

*Polygonum hydropiper* L., V, H

*Polygonum lapathifolium* Ait., V, Th

*Polygonum minus* Huds., NL, H (*P. posumbu* Wall.)

*Polygonum odoratum* Lour., NL, Th

*Polygonum orientale* L., V, Th

*Polygonum perfoliatum* L., V, H

*Polygonum plebejum* R.Br., V, H

*Polygonum tinctorium* Lour., V, Th

*Rumex wallichii* Meisn., NL, Th

**PORTULACACEAE**

*Portulaca oleracea* L., NL, Th

**PRIMULACEAE**

*Androsace saxifragifolia* Bge., V, Th

*Lysimachia candida* Lindl., V, Ch

*Lysimachia* sp1., V, Ch

*Lysimachia* sp2., V, Ch

*Lysimachia* sp3., V, Ch

*Lysimachia* sp4., V, Ch

**PROTEACEAE**

*Helicia cochinchinensis* Lour., V, Mi

*Helicia* aff. *erratica* Hook., V, Mi

*Heliciopsis lobata* (Merr.) Skum., V, Mi

**RANUNCULACEAE**

*Clematis armandi* Fanch., V, Lp

*Clematis meyniana* Walp., V, Ch

*Clematis smilacifolia* Walp., V, Ch

*Clematis umbellifera* Gagnep., V, Lp

*Clematis uncinata* Champ., V, Lp

*Ranunculus japonicus* Langsd., V, Ch

*Ranunculus scleratus* L., V, Th

**RHAMNACEAE**

*Berchemia lineata* DC., NL, Lp

*Chaydaia tonkinensis* Pitard, V, Mi

*Gouania leptostachya* DC., V, Lp

*Rhamnus tonkinensis* Pitard, V, Na

*Sageretia theezans* Brongn., NL, Lp

*Ventilago calyculata* Tul. var. *macrantha* Pitard, V, Lp

*Ventilago leiocarpa* Benth., V, Lp

*Ventilago pauciflora* Pitard, V, Lp

*Zizyphus mauritiana* Lam., V, Na

*Zizyphus oenoplia* Mill., V, Mi

*Zizyphus* sp., V, MM

**RHIZOPHORACEAE**

*Carallia brachiata* (Lour.) Merr., V, MM (*C. lucida* Roxb.)

*Carallia lancaefolia* Roxb., V, Mi

**ROSACEAE**

*Duchesnea indica* (Andr.) Focke, V, Ch

*Eriobotrya bengalensis* (Roxb.) Hook.f., V, MM

*Eriobotrya japonica* (Thunb.) Lindl., V, MM

*Fragaria indica* L., V, H

*Persica vulgaris* Mill., V, Mi

*Photinia benthamiana* Hance, V, Mi

*Prunus mume* Sieb. & Zucc. V, Mi

*Prunus salicina* Lindl., V, Mi

*Prunus zippeliana* Miq., V, MM (*P. macrophylla* Sieb. & Zucc.)

*Pygeum* sp1., SL, MM

*Pygeum* sp2., SL, MM

*Pyrus* sp., SUM, MM

*Raphiolepis indica* (L.) Lindl. ex Ker, V, Na

*Rosa cymosa* Tratt., NL, Na (*R. microcarpa* Lindl.)

*Rubus alcaefolius* Poir., V, Lp

*Rubus cochinchinensis* Tratt., V, Lp

*Rubus leucanthus* Hance, V, Lp

*Rubus triphyllus* Thunb., V, Ch

**RUBIACEAE**

*Adina piluliflora* (Lam.) Franch. ex Drake, V, Mi

(*A. globiflora* Salisb. var. *tonkinensis* Pitard)

*Aidia cochinchinensis* Lour., S, UM, Mi

*Anthocephalus indicus* A. Rich. var. *macrophylla* Pierre, V, MM

*Canthium dicoccum* (Gaertn.) Tinn. & Binn, SUM, MM

*Canthium* sp., V, Na

*Cephalanthus* sp., V, Ch

*Chasalia curviflora* (Wall. ex Roxb.) Thw., V, Na

*Diplospora* sp., V, MM

*Duperrea pavettaefolia* Pitard, V, Na

*Gardenia coronaria* Ham., V, Na

*Gardenia florida* L., V, H

*Geophila reniformis* G. Don, V, Th

*Hedyotis capitellata* Wall. ex G. Don, V, MM

*Hedyotis corymbosa* (L.) Lam., NL, Na

*Hedyotis multiglomerulata* (Pitard) Tran, V, Na

*Hymenodyction excelsum* Wall. var. *velutinum* Pierre., V, MM



*Ixora diversifolia* Wall. var. *flexilis* Pitard, V, Na  
*Ixora finlaysoniana* Wall., V, Mi  
*Ixora henryi* Lev., V, Na  
*Ixora* sp1., V, Na  
*Ixora* sp2., V, Na  
*Lasianthus andamanicus* Hook., V, Mi  
*Lasianthus cyanocarpus* Jack., V, Na  
*Lasianthus wallichii* Wight, V, Mi  
*Lasianthus* sp1., V, Na  
*Lasianthus* sp2., V, Na  
*Lasianthus* sp3., NL, Na  
*Morinda umbellata* L. var. *tonkinensis* Pitard, V,  
 Lp  
*Morinda villosa* Hook., V, Lp  
*Morinda* sp., V, Lp  
*Mussaenda cambodiana* Pierre, V, Lp  
*Mussaenda debiscens* Craib, V, Mi  
*Mussaenda* sp1., V, Lp  
*Mussaenda* sp2., V, Lp  
*Mycetia longifolia* Kuntze, V, Na  
*Myrioneuron tonkinensis* Pitard, V, Na  
*Myrioneuron* sp., V, Th  
*Nauclea* sp., V, MM  
*Neonauclea sessilifolia* (Roxb.) Merr., V, MM  
 (*Adina sessiliflora* Hook.)  
*Oldenlandia* sp1., V, Th  
*Oldenlandia* sp2., V, Ch  
*Oldenlandia* sp3., V, Ch  
*Oldenlandia* sp4., V, Ch  
*Ophiorrhiza annamica* Pitard, V, Th  
*Ophiorrhiza* aff. *baviensis* Drake, V, Ch  
*Ophiorrhiza* aff. *tristis* Drake, V, Th  
*Ophiorrhiza* sp1., V, Ch  
*Ophiorrhiza* sp2., V, Th  
*Paederia scandens* (Lour.) Merr. var. *tomentosa*  
 (Blume) Hand.-Mazz., V, Lp  
*Paederia* sp1., V, Th  
*Paederia* sp2., V, Th  
*Pavetta indica* L. var. *indica* Hook., V, Na  
*Psychotria baviensis* Pitard, V, Ch  
*Psychotria rubra* (Lour.) Poir., V, Na  
*Psychotria* sp1., V, Na  
*Psychotria* sp2., V, Na  
*Psychotria* sp3., V, Na  
*Psychotria* sp4., V, Na  
*Randia acuminatissima* Merr., V, MM  
*Randia spinosa* (Thunb.) Poir., V, Na  
*Randia stenantha* Drake, SUM, Na  
*Randia* sp1., V, Mi  
*Randia* sp2., V, Mi  
*Silvianthus bracteatus* Hook., V, Na  
*Tarenna attenuata* (Voight) Hutch., V, Na  
*Tarenna collinsae* Craib, V, Na  
*Tarenna quosensis* Pierre & Pitard, V, Na  
*Tarenna vanpruckii* Craib, V, Na

*Tarenna* sp1., V, Na  
*Tarenna* sp2., V, Na  
*Tarenna* sp3., V, Na  
*Uncaria macrophylla* Wall., V, Lp  
*Uncaria sessilifructus* Roxb., V, Lp  
*Uncaria tonkinensis* Haval., V, Lp  
*Urophyllum* sp., V, Na  
*Xantonea quosensis* Pierre, V, Mi  
*Xantonea* sp., V, Mi  
*Wendlandia glabrata* DC., V, Mi  
*Wendlandia paniculata* DC., V, Mi

## RUTACEAE

*Acronychia pedunculata* Roxb., V, MM  
*Atalantia guillauminii* Swingle, SL, Mi  
*Atalantia monophylla* Correa, V, Mi (*A.*  
*roxburghiana* Hook.)  
*Atalantia roxburghiana* Hook.f., V, Mi  
*Citrus lemon* (L.) Burm. f., V, Na  
*Citrus maxima* (Burm. f.) Merr., V, Mi (*C.*  
*grandis* Osbeck)  
*Citrus sinensis* Osbeck, V, Mi  
*Clausena dunniana* Levl., V, Mi  
*Clausena excavata* Burm., SL, Mi  
*Clausena harmandiana* Pierre ex Guill., V, Mi  
*Clausena laevis* Drake, V, Na  
*Clausena lansium* Skeels, V, Mi (*Clausena wampi*  
 (Blanco) Oliv.)  
*Euodia fraxinifolia* (Benth.) Hook., SL, MM  
*Euodia leptota* (Spreng.) Merr., V, Mi (*E. triphylla*  
 DC.)  
*Euodia meliaefolia* Benth., V, Mi  
*Glycosmis citrifolia* Lindl., V, Mi  
*Glycosmis* aff. *craibii* Tanaka, V, Mi  
*Glycosmis pentaphylla* Correa, V, Mi  
*Glycosmis petelotii* Guill., V, Mi  
*Glycosmis puberula* Lindl. ex Wall., V, Mi  
*Glycosmis* aff. *trichanthera* Guill., V, Mi  
*Glycosmis winitii* Craib, V, Mi  
*Micromelum falcatum* Tanaka, V, Mi  
*Micromelum hirsutum* Oliv., V, Mi  
*Murraya koenigii* (L.) Spreng., SUM, Mi  
*Murraya paniculata* (L.) Jack, SUM, Mi  
*Zanthoxylum avicenniae* (Lam.) DC., SUM, Mi  
*Zanthoxylum collinsae* Craib, V, Lp  
*Zanthoxylum nitidum* DC., V, Lp  
*Zanthoxylum scabrum* Guill., V, Lp

## SABIACEAE

*Meliosma harmandiana* Pierre, V, Mi  
*Moliosma thorelli* Lecomte, V, MM

## SAPINDACEAE

*Allophylus brachystachys* Radlk., V, Mi  
*Allophylus caudatus* Radlk., V, Mi  
*Allophylus racemosus* (L.) Radlk., V, Mi

*Boniiodendron parviflorum* (Lecomte) Gagnep., V, Mi

*Cardiospermum halicacabum* L., V, Th

*Dimocarpus longan* (Lour.) Steud., NL, Mi

*Euphoria fragifera* Gagnep., V, MM

*Lepisanthes rubiginosa* (Roxb.) Leenh., V, Mi  
(*Erioglossum edule* Blume)

*Litchi chinensis* Radlk., V, MM

*Mischocarpus oppositifolius* (Lour.) Merr., V, MM  
(*M. sundaicus* Blume)

*Nepbelium chryseum* Blume, SL, Mi

*Pavieasia annamensis* Pierre, V, Mi

*Pometia pinnata* J. & G. Forst., V, MM

*Pometia* sp., V, MM

*Sapindus saponaria* Lour., V, MM (*S. mukorossi* Gaertn.)

*Xerospermum donaiense* Gagnep., V, MM

*Zollingeria* sp., SUM, Mi

#### SAPOTACEAE

*Sarcosperma kachinense* (King & Prain) Exell, V, Mi

*Sideroxylon* sp., SL, Na

*Sinosideroxylon racemosum* (Pierre ex Dubard) Aubr., SL, MM (*Sideroxylon racemosum* Lecomte)

#### SAURURACEAE

*Gymnotheca chinensis* Decne., V, H

*Houttuynia cordata* Thunb., V, Ch

*Saururus chinensis* Baill., V, Cr

#### SCROPHULARIACEAE

*Bacopa floribunda* (R.Br.) Wetts., V, Ch  
(*Herpestis moniera* H.B.K.)

*Linnophila sessiliflora* Blume, NL, H

*Lindernia antipoda* (L.) Alston, NL, Th  
(*Bonnaya veronicifolia* Spreng.)

*Lindernia pedunculata* Benth. var. *erecta* Bonati, NL, Ch

*Mazus* sp., NL, Th

*Picria fel-terrae* Lour., V, Th (*Curanga amara* Juss.)

*Torenia finetiana* Bonati, V, Ch

*Torenia tonkinensis* Bonati, V, Ch

*Veronica anagalis* L., V, H

#### SIMAROUBACEAE

*Ailanthus triphysa* (Dennst.) Alston, NL, MM  
(*Ailanthus malabarica* DC.)

*Brucea tonkinensis* (Lecomte) Gagnep., V, Mi  
(*B. mollis* Wall. var. *tonkinensis* Lecomte)

*Picrasma* sp., V, MM

#### SOLANACEAE

*Datura suaveolens* Humb. & Bonpl., V, Th  
(*D. fastuosa* L. var. *alba*)

*Physalis angulata* L. var. *villosa* Bonati, V, Th

*Solanum biflorum* Lour., V, Na

*Solanum procumbens* Lour., V, Lp (*S. hainanense* Hance)

*Solanum indicum* L., V, Na

*Solanum nigrum* L., NL, Th

*Solanum torvum* Swartz, NL, Na

*Solanum verbascifolium* L., V, Mi

*Solanum xanthocarpum* Schrad., V, Ch

#### STAPHYLEACEAE

*Turpinia cochinchinensis* Merr., V, Mi

*Turpinia nepalensis* Wall., V, Mi

*Turpinia pomifera* DC., V, MM

*Turpinia* sp1., V, Mi

*Turpinia* sp2., V, Mi

#### STERCULIACEAE

*Abroma augusta* L., V, Na

*Byttneria apera* Colebr., V, Lp

*Byttneria echinata* Wall., V, Lp

*Eriolaena candollei* Wall., V, MM

*Firmania colorata* R. Br., V, MM

*Firmania platanifolia* L., V, MM

*Helicteres angustifolia* L., NL, Na

*Helicteres hirsuta* Lour., NL, Na

*Helicteres isora* L., NL, Na

*Helicteres lanceolata* DC., NL, Na

*Helicteres viscida* Blume, NL, Na

*Heritiera macrophylla* Wall., SL, MM

*Heritiera* sp. nov., SUM, MM

*Melochia corchorifolia* L., NL, Ch

*Pterospermum heterophyllum* Hance, SUM, MM

*Pterospermum lancaefolium* Roxb., SL, MM

*Pterospermum megalocarpum* Tard., SL, MM

*Pterospermum truncatolobatum* Gagnep., SUM, MM

*Pterospermum venustum* Craib, SL, MM

*Sterculia coccinea* Roxb., V, MM

*Sterculia hyposticta* Miq., V, Na

*Sterculia lanceolata* Cav., V, Mi

*Sterculia lissophylla* Pierre, V, MM

*Sterculia parviflora* L., V, MM

*Sterculia radicans* Gagnep., V, Na

*Sterculia tonkinensis* Gagnep., V, Mi

#### STYRACACEAE

*Styrax tonkinensis* Pierre, SL, MM

#### SYMPLOCACEAE

*Symplocos chinensis* Desv. ex Merr., V, Na

*Symplocos cochinchinensis* Lour., V, MM

#### THEACEAE

*Camellia caudata* Wall., V, Mi

*Camellia flava* (Pitard) Sealy, V, Mi

*Camellia tonkinensis* (Pitard) Cohen-Stucort, V, Mi

*Eurya trichocarpa* Korth., V, Mi

#### THYMELEACEAE

*Wikstroemia indica* (L.) C. A. Mey., SUM, Mi

#### TILIACEAE

- Colona poilanei* Gagnep., V, MM  
*Corchorus acutangulus* Lam., NL, Th  
*Grewia bilamellata* Gagnep., SL, Mi  
*Grewia hirsuta* Vahl, SL, Na  
*Grewia tomentosa* Juss., SL, Mi  
*Grewia microcos* L., NL, Mi  
*Triumphetta bartramia* L., NL, Na (*T. rhomboidea* Jacq.)  
*Triumphetta pseudocana* Sprag. & Craib, NL, Na (*T. tomentosa* Bojer.)

#### ULMACEAE

- Celtis orientalis* Thunb., SL, MM  
*Celtis* sp., SUM, Mi  
*Gironniera subaequalis* Planch., V, MM  
*Trema orientalis* (L.) Blume, V, MM

#### URTICACEAE

- Boehmeria holosericea* Blume, V, Ch  
*Boehmeria nivea* (L.) Gaudich., V, Na  
*Boehmeria nivea* (L.) Gaudich. var. *tenacissima* (Gaudich.) Miq., V, Na  
*Boehmeria macrophylla* Hornem., V, Mi (*B. platyphylla* Don)  
*Boehmeria tonkinensis* Gagnep., V, Ch  
*Boehmeria* sp., V, Na  
*Debregesia squamata* King, V, Na  
*Dendrocnide urentissima* (Gagnep.) Chew, V, Mi (*Laportea urentissima* Gagnep.)  
*Elatostema balansae* Gagnep., V, Ch  
*Elatostema eurhynchum* Miq., V, Ch  
*Elatostema rupestre* Wedd., V, Ch  
*Laportea* sp., V, Th  
*Pellionia repens* Lour., V, H (*Pellionia daveauana* N. E. Br.)  
*Pellionia* sp1., V, H  
*Pellionia* sp2., V, H  
*Petelotiella* sp., V, H  
*Pilea alongensis* Gagnep., V, Ch  
*Pilea boniana* Gagnep., V, Ch  
*Pilea peltata* Hance, V, Ch  
*Pilea peploides* (Gaudich.) Hook., V, Ch  
*Pilea petelotii* Gagnep., V, H  
*Pouzolzia hirta* Hassk., V, H  
*Pouzolzia indica* Gaudich., V, Ch  
*Pouzolzia pentandra* Benn., V, Ch  
*Pouzolzia sanguinea* (Blume) Merr., V, Ch (*P. viminea* Wedd.)  
*Procris* sp., V, Ch  
*Villebrunea boniana* Gagnep., V, Na  
*Villebrunea integrifolia* Gaudich., V, Mi

*Villebrunea frutescens* Blume, V, Na  
*Villebrunea frutescens* Blume var. *nivea* Gagnep., V, Na

#### VERBENACEAE

- Callicarpa aborea* Roxb., V, Mi  
*Callicarpa candicans* (Burm. f.) Hochr., V, Na (*C. cana* L.)  
*Callicarpa dichotoma* (Lour.) Reusch. var. *simatodenticulata* P. Do, V, Na  
*Callicarpa albida* Blume, V, Mi (*C. longifolia* Lam.)  
*Callicarpa loureiri* Hook. & Arn., V, Na  
*Callicarpa macrophylla* Vahl, V, Na  
*Callicarpa nudiflora* Hook. & Arn., V, Na (*C. revesii* Wall.)  
*Callicarpa rubella* Lindl., NL, Mi  
*Callicarpa* sp., SL, Mi  
*Clerodendrum calamitosum* L., V, Mi  
*Clerodendrum colebrookianum* Walp., V, Na  
*Clerodendrum cyrtophyllum* Turcz., V, Na  
*Clerodendrum gaudichaudii* P. Dop, V, Na  
*Clerodendrum kaempferi* (Jacq.) Sieb. Ex Hassk., V, Na  
*Clerodendrum lecomtei* P. Dop, V, Mi  
*Clerodendrum philippinum* Schauer var. *simplex* Wu & Ifang., V, Na  
*Clerodendrum serratum* (L.) Moon., V, Na  
*Clerodendrum tonkinensis* P. Dop, V, Na  
*Clerodendron vampukii* Craib, V, Mi  
*Congea tomentosa* Roxb., NL, Lp  
*Duranta plumieri* Jacq., NL, Na  
*Gmelina lacomei* P. Dop, V, MM  
*Lantana camara* L., V, Na  
*Phyla nodiflora* (L.) Greene, NL, Ch  
*Premna chevalieri* P. Dop, V, Na  
*Premna corymbosa* (Burm.f.) Rottl., V, Na  
*Premna flavescens* Ham., V, Lp  
*Premna fulva* Craib, V, Na  
*Premna stenobotrys* Merr., V, Na  
*Stachytarphyta jamaicensis* (L.) Vahl, V, Th  
*Verbena officinalis* L., V, Ch  
*Vitex negundo* L., SL, Mi  
*Vitex quinata* Williams, SL, MM  
*Vitex stylosa* P. Dop, SL, Mi  
*Vitex sumatrana* Miq. var. *uroeolata* King, SL, MM  
*Vitex tripinnata* (Lour.) Merr., SL, Mi (*V. leptobotrys* Hall.)

#### VIOLACEAE

*Viola inconspicua* Blume, V, Ch

#### VISCACEAE

- Viscum articulatum* Burm., SUM, Pp  
*Viscum articulatum* Burm. var. *balansae* Lecomte, SUM, Pp

*Viscum orientale* Willd., SUM, Pp

#### VITACEAE

*Ampelopsis brevipedunculata* Koehne, V, Lp  
*Cayratia tenuifolia* Gagnep., V, Ch  
*Cayratia* sp1., V, Ch  
*Cayratia* sp2., V, Ch  
*Cissus modeccoides* Planch. var. *subintegra*  
 Gagnep., NL, Lp  
*Cissus subtetragona* Planch., V, Lp  
*Parthenocissus landuk* Gagnep., V, Ch  
*Tetrastigma pachyphyllum* (Hemsl.) Chun., V, Lp  
*Tetrastigma retinerivium* Planch., V, Lp  
*Tetrastigma tonkinensis* Gagnep., V, Lp  
*Tetrastigma* sp1., V, Lp  
*Tetrastigma* sp2., V, Lp  
*Vitis pentagona* Diels & Gills, V, Ch

### LILIOPSIDA

#### ALISMACEAE

*Sagittaria sagittifolia* L., NL, Cr

#### AMARYLLIDACEAE

*Crinum asiaticum* L., NL, Cr  
*Crinum ensifolium* Roxb., NL, Cr

#### ARACEAE

*Acorus gramineus* Soland., V, Cr  
*Aglaonema modestum* Schott ex Engl., V, H (*A. siamense* Engl.)  
*Alocasia macrorrhiza* Schott, V, H  
*Amorphophallus paeoniifolius* (Dent.) Nicols.  
 var. *campanulatus* (Roxb.) Sivad., V, Cr (*A. campanulatus* Roxb.)  
*Amorphophallus cirrifer* Stapf., V, Cr  
*Amorphophallus tonkinensis* Engl., V, Cr  
*Anadendron latifolium* Hook., V, Ep  
*Arisaema balansae* Engl., V, Th  
*Colocasia indica* Hassk., V, Cr  
*Homalomena occulta* (Lour.) Schott, V, H  
*Lasia spinosa* (L.) Thw., V, Cr  
*Lasia* sp., V, Cr  
*Pothos gigantipes* S. Buchet, V, Ep  
*Pothos kerrii* S. Buchet, V, Ep  
*Pothos repens* (Lour.) Druce, V, Ep  
*Pothos scandens* L., V, Ep  
*Pothos yunnanensis* Engl., V, Ep  
*Rapidophora bonii* Engl., V, Ep  
*Rapidophora decursiva* (Roxb.) Schott, V, Ep  
*Rapidophora hookeri* Schott, V, Ep  
*Typhonium divaricatum* (L.) Decne., V, Cr  
*Typhonium trilobatum* Schott, V, Cr

#### ARECACEAE (PALMAE)

*Areca catechu* L., NL, MM  
*Arenga pinnata* (Wurmb) Merr., SL, Mi  
*Calamus platycanthus* Warb., NL, Lp

*Calamus pseudoscutellaris* Conrard, NL, Lp  
*Calamus rudentum* Lour., NL, Lp  
*Calamus tetradactylus* Hance, NL, Lp  
*Caryota bacsonensis* Mag., SL, MM  
*Caryota mitis* Lour., V, Na  
*Caryota monostachya* Becc., V, Ch  
*Caryota sympetala* Gagnep., V, Mi  
*Licuala bracteata* Gagnep., V, Ch  
*Licuala fatua* Becc., V, Ch  
*Licuala tonkinensis* Becc., V, Ch  
*Livistona saribus* (Lour.) Merr. & Chev., V, MM  
 (*L. cochinchinensis* Mart.)  
*Pinanga baviensis* Becc., V, Ch  
*Rhapis micrantha* Becc., SL, Ch  
*Rhapis laosensis* Becc., SL, Na  
*Rhapis* sp., SL, Ch  
*Salacca edulis* Reinw., V, Mi (*Zalacca wallichiana* Mart.)  
*Wallichia gracilis* Becc., V, Na

#### ASPHODELACEAE

*Chlorophytum laxum* R. Br., V, Cr  
*Chlorophytum orchidastrum* Lindl., V, Th

#### ASTELIACEAE

*Cordyline fruticosa* (L.) A.Chev., V, Na (*C. terminalis* Kunth var. *ferrea* Bak.)

#### BURMANIACEAE

*Burmannia coelestis* G. Don, V, Cr

#### CANNACEAE

*Canna edulis* L., SL, Cr  
*Canna hybrida* Hort., NL, Cr  
*Canna indica* L., NL, Cr

#### COMMELINACEAE

*Aneilema nudiflorum* (L.) Wall., V, H  
*Aneilema medicum* (Lour.) Kost., V, H (*A. loureirii* Hance)  
*Commelina benghalensis* L., V, H  
*Commelina diffusa* Burm. f., V, H (*C. nudiflora* L.)  
*Commelina paludosa* Blume, V, H (*C. obliqua* Hance)  
*Floscopa glabratus* (Kunth) Hassk., V, H  
*Floscopa scandens* Lour., V, Th  
*Floscopa* sp., V, H  
*Forrestia glabratus* (Hassk.) Hassk., V, H  
*Pollia thyrsiflora* (Blume) Endl., V, Cr  
*Rhaeo spathacea* (Sm.) Stearn., SL, Cr (*S. discolor* Hance)  
*Streptolirion* sp., V, H  
*Zebrina pendula* Schinzl., V, H

#### CONVALLARIACEAE

*Aspidistra tonkinensis* (Gagnep.) Wang & Lang, V, Cr (*Collania tonkinensis* Gagnep.)  
*Aspidistra typica* Baill., V, Cr

*Aspidistra* sp1., V, Cr  
*Aspidistra* sp2., V, Cr  
*Disporopsis longifolia* Craib, V, Cr  
*Disporum angustifolium* Roxb., V, Cr  
*Disporum calcaratum* D. Don var. *rubrifolium*  
 Gagnep., V, Cr  
*Disporum cantonense* (Lour.) Merr., V, Ch  
*Liriope spicata* Lour., V, Cr  
*Neolourya pierreii* Rodr., V, Cr  
*Neolourya wabari* Rodr., V, Cr  
*Ophiopogon dracaenoides* Hook.f., V, Ch  
*Ophiopogon japonicus* (L.f.) Ker-Gawl., V, Cr  
*Ophiopogon latifolius* Rodr., V, Ch  
*Ophiopogon longifolius* Decne., V, Cr  
*Ophiopogon reptans* Hook.f., V, Cr  
*Peliosanthes labroyana* Pierre ex Rodr., V, H  
*Peliosanthes macrophylla* Wall.ex Bak., V, Cr  
*Peliosanthes serrulata* Rodr., V, Cr  
*Peliosanthes tetra* Andr., V, Cr  
*Polygonatum tonkinensis* Gagnep., V, Cr  
*Tupistra tonkinensis* Baill., SL, H

## COSTACEAE

*Costus speciosus* (Koenig) Sm., V, Cr  
*Costus tonkinensis* Gagnep., V, Cr

## CYPERACEAE

*Carex brunnea* Thunb., SL, Th  
*Carex cryptostachys* Brongn., SUM, H  
*Carex indica* L., SUM, H  
*Carex leucociflora* Bunge, SL, Cr  
*Carex maubertiana* Boot., SUM, H  
*Carex trongii* Khoi, SL, H  
*Carex* sp1., V, H  
*Carex* sp2., SU, H  
*Carex* sp3., SM, H  
*Carex* sp4., V, H  
*Cyperus compressus* L., V, H  
*Cyperus cuspidatus* K. B. K., V, Th  
*Cyperus difformis* L., V, Th  
*Cyperus diffusus* Vahl var. *diffusus*, V, H var.  
*latifolius* L. K. Dai  
*Cyperus digitatus* Roxb., V, Th  
*Cyperus distans* L.f., V, Th  
*Cyperus haspan* L., V, H  
*Cyperus imbricatus* Retz., V, Th (*C. radiatus*  
 Vahl)  
*Cyperus iria* L., V, Th  
*Cyperus nutans* Vahl var. *eleusinoides* (Kunth)  
 Haines, V, Th  
*Cyperus pilosus* (L.) Vahl, V, H  
*Cyperus rotundus* L., V, Cr  
*Cyperus tenuispica* Steud., V, Th  
*Cyperus zollingeri* Steud., V, H  
*Eleocharis atropurpurea* (Retz.) Presl, V, Th  
 (*Heleocharis atropurpurea* (Retz.) Presl)  
*Eleocharia geniculata* (L.) Roem & Schult., V,

Th (*H. caribaca* (Rottb.) Blatke, *H. capitata*  
 R.Br.)

*Fimbristylis complanata* (Retz.) Link, V, Th  
*Fimbristylis dichotoma* (L.) Vahl, V, Th  
*Fimbristylis diphylla* Vahl var. *diphylla*, V, Th  
 var. *pluristriata* Clarke  
*Fimbristylis miliacea* (L.) Vahl, V, Th  
*Fimbristylis monostachya* (L.) Hassk., NL, Th  
*Fimbristylis pauciflora* R.Br., NL, Th  
*Fimbristylis quinquangularis* (Vahl) Kunth, NL,  
 Th  
*Fimbristylis squarrosa* Vahl, NL, Th  
*Fimbristylis thomsonii* Bockl., NL, Th  
*Fimbristylis umbellata* Rottb., NL, Cr  
*Fuirena ciliatis* (L.) Roxb., NL, Th (*F. glomerata*  
 Lam.)  
*Heleocharis congesta* D. Don, V, Th  
*Hypolytrum nemorum* (Vahl) Spreng., V, Cr (*H.*  
*latifolium* L. C. Rich.)  
*Kyllinga brevifolia* Rottb., NL, H  
*K. monocephala* Rottb., NL, H  
*Mapania macrocephala* K. Schum. & Warb., V,  
 Cr  
*Mariscus compastus* (Retz.) Druce, V, Th  
 (*Sphacromariscus microcephalus* E.G.Camus)  
*Mariscus umbellatus* Vahl, V, Cr  
*Pycneus flavidus* Retz., var. *flavidus*, NL, Cr  
 (*P. globosus* (All.) Reichb.) var. *strictus* Clarke  
*Pycneus nilagiricus* Steud., NL, Cr  
*Rhynchospora rubra* (Lour.) Makino, NL, Th  
 (*Rhynchospora wallichiana* Kunth)  
*Scleria juncooides* Roxb., NL, Cr  
*Scleria mucronatus* L., NL, Cr  
*Scleria radula* Hance, NL, Cr  
*Scleria supinus* L., NL, Cr  
*Scleria tessellata* Willd., NL, Cr

## DIOSCOREACEAE

*Dioscorea alata* L., NL, Cr  
*Dioscorea glabra* Roxb., SL, Cr  
*Dioscorea hamiltonii* Hook., V, Cr  
*Dioscorea nummularia* Lam., V, Cr (*D. pyriformis*  
 Kunth)  
*Dioscorea pentaphylla* L., V, Cr  
*Dioscorea persimilis* Prain & Burk., SL, Cr

## DRACAENACEAE

*Dracaena angustifolia* Roxb., V, Mi  
*Dracaena cambodiana* Pierre & Gagnep., SUM,  
 Mi

## ERIOCAULACEAE

*Eriocaulon intermedium* Koern., NL, Cr

## HYPOXIDACEAE

*Curculigo annamitica* Gagnep., V, Cr  
*Curculigo gracilis* Wall., V, Cr  
*Hypoxis* sp., V, Cr

## IRIDACEAE

*Belamcanda chinensis* (L.) DC., NL, Cr

## JUNCACEAE

*Juncus prismatocarpus* R. Br., NL, Th

## MARANTACEAE

*Phrynium capitatum* Willd., V, Cr

*Phrynium dispernum* Gagnep., V, Cr

*Phrynium thorelii* Gagnep., V, Cr

*Stachyphrynium* sp., V, Cr

## MUSACEAE

*Musa itinerans* Chessman, V, H

*Musa uranoscopos* Lour. (*M. coccinea* Andr.), V, H

## ORCHIDACEAE

*Acampe rigida* (Smith) P.P. Hunt, SL, Ep

*Aerides odoratum* Lour., SL, Ep

*Anaphora liparioides* Gagnep., V, H

*Appendicula cornuta* Blume, V, Ep

*Arundina chinensis* Blume, NL, H

*Arundina graminifolia* D. Don, NL, H

*Bulbophyllum concinum* Hook. f., SL, Ep

*Bulbophyllum delitescens* Hance, SL, H

*Bulbophyllum lepidum* (Blume) Smith, SUM, Ep

(*Cirrhopetalum siamese* Rolfe ex Donie)

*Bulbophyllum nigrescens* Rolfe, V, H

*Bulbophyllum stenobullon* Par. & Reichb.f., V, H

*Bulbophyllum taeniophyllum* Par. & Reichb.f.,  
SL, H

*Bulbophyllum xylophyllum* Par. & Reichb.f., SL,  
H

*Calanthe angusta* Lindl., V, H

*Calanthe alismifolia* Lindl., V, Cr

*Calanthe herbacea* Lindl., V, Cr

*Calanthe triplicata* (Willem.) Ames, V, Cr (*C.*  
*veratrifolia* R.Br.)

*Cleisostema aspersum* (Reichb.f.) Garay, V, Ep

*Cleisostema striatum* (Reichb.f.) Garay, V, Ep

*Coelogyne fimbriata* Lindl., V, Ep

*Coelogyne nitida* Hook., V, Ep

*Coelegyne brachyptera* Reichb.f., SL, Ep

(*C. parishii* Auct. non Hook.f.)

*Corymbokis veratrifolia* (Reinw.) Blume, V, Ch

*Cymbidium aloifolium* (L.) Sw., V, Ep

*Cymbidium lancifolium* Hook.f., V, Ep

*Dendrobium acinaciforme* Roxb., V, Ep

*Dendrobium crumenatum* Sw., V, Ep

*Dendrobium dentatum* Seidenf., SUM, Ep  
(*D. tenellum* auct. non Lindl.)

*Dendrobium lindleyi* Steud. (*D. aggregatum*  
Roxb.), V, Ep

*Dendrobium gibsonii* Lindl., V, Ep

*Dendrobium hercoglobum* Reichb.f. (*D. poilanei*  
Guill.), V, Ep

*Dendrobium moschatum* Sw., SL, Ep

*Dendrobium nobile* Lindl., SL, Ep

*Dendrobium oxyphyllum* Gagnep., SL, Ep

*Dendrobium podagraria* Hook. f., V, Ep

*Dendrobium superbum* Reichb.f. var. *delacurii*  
Gagnep. & Guill., V, Ep

*Dendropogon aducum* Hook.f., V, H

*Dendropogon wardianum* Warner, V, H

*Desmotrichum poilanei* Gagnep., SUM, Ep

*Eria arneri* Reichb.f., SL, Ep

*Eria coronaria* (Lindl.) Reichb.f., SL, Ep

*Eria globulifera* Seidenf., V, Ep

*Eria petelotii* Gagnep., SUM, Ep

*Erithrodes blumei* (Lindl.) Schlecht, V, Ep

*Erithrodes chinensis* (Rolfe) Schltr., SUM, Ep

*Galeola javanica* Benth., V, Th

*Galeola nudifolia* Lour. (*G. hydra* Reichb.f.),  
NL, Lp

*Gastrochilus obliquus* (Lindl.) Kuntze, V, Ep

*Goodyera fumata* Thw., V, H

*Goodyera hispida* Lindl., V, H

*Goodyera procora* (Ker-Gawl.) Hook., V, H

*Goodyera soliosa* (Lindl.) Benth. ex Clark, SUM,  
H

*Haemaria* sp., V, H

*Hetaria rubens* (Lindl.) Benth. ex Hook.f., V, Cr

*Kingidium deliciosum* (Reichb.f.) Sweet., V, Ep  
(*K. decumbens* (Griff.) Rolfe)

*Liparis cordigera* Hook.f. var. *argentopunctata*  
(Aver.) Aver., V, Ep

*Liparis distans* Clark., V, Ep

*Liparis latilabris* Rolfe, V, Ep

*Liparis manii* Reichb.f., V, Ep

*Liparis nervosa* (Thunb.) Lindl., V, Ep

*Ludisia discolor* (Ker-Gawl.) Reichb.f., V, Cr  
(*Haemaria discolor* (Ker-Gawl.) Lindl.)

*Luisia morsei* Rolfe, V, Ep

*Malaxis acuminata* D. Don, V, Ep

*Malleola insectifera* (J.J. Sm.) J.J. Sm. &  
Schlecht., V, Ep

*Neogyna* sp., V, Ep

*Nenuwiedia singaporeana* (Baker) Rolfe, V, Cr (*N.*  
*balansae* Baill.)

*Oberonia ensiformis* (J.E. Sm.) Lindl., SL, Ep

*Oberonia longibracteata* Lindl., V, Ep

*Oberonia myosurus* (Foster) Lindl., V, Ep

*Oberonia pachyphylla* King & Pantl., V, Ep

*Paphiopedilum appletonianum* Rolfe, SUM, Cr

*Paphiopedilum delenatii* Guill., SUM, Cr

*Pelatatheria insectifera* (Reichb.f.) Ridl., SL

*Phajus tankervilleae* (Banks ex L'Her.) Blum,  
NL, Cr

*Phalaenopsis gibbosa* Sweet, V, Ep

*Phalaenopsis lobbii* (Reichb.f.) Sweet, V, Ep

*Phalaenopsis parishii* Reichb.f., V, Ep

*Pholidota rubra* Lindl., V, Cr

*Pholidota yunnanensis* Rolfe, V, Cr

*Phreatia secunda* (Blume) Lindl., V, Cr

*Physurus* sp., V, Cr  
*Pogonia flabelliformis* Lindl., NL, Cr  
*Renanthera coccinea* Lour., SL, Ep  
*Robiquetia suceisa* (Lindl.) Seidenf., V  
*Sarcanthus krempfi* Guill., V, Ep  
*Sarcanthus* sp., V, Ep  
*Spiranthes sinensis* (Pers) Ames (*S. australis* Lindl.), NL, Cr  
*Sunipia andersonii* (King & Pantl.) P.F. Hunt., SUM, Ep (*lone purpurata* Braid)  
*Tbrispermum carnosum* (Ridl.) Schlectht., V, Ep  
*Tbrispermum centipeda* Lour., SL, Ep  
*Trichotosia curculigoides* Lindl., SL, Ep  
*Trichotosia pulvinata* (Lindl.) Kraezl., V, Ep  
*Vanda concolor* Blume, V, Ep  
*Vanda doritoides* Guill., SL, Ep  
*Vanda teres* Lindl., SL, Ep  
*Vanda viminea* Guill., SL, Ep  
*Vanilla annamica* Gagnep., SUM, Ep  
*Vrydagzynea albida* (Blume) Blume, V, Ep  
*Zeuxine nervosa* (Wall.ex Lindl.) Benth.ex Clark, SL, Ep  
*Zeuxine vietnamica* Aver., SL, Ep

## PANDANACEAE

*Pandanus odoratissimus* L.f. (*P. loureiri* Gaudich.), V, Mi  
*Pandanus tonkinensis* Martelli, V, Na

## PHORMIACEAE

*Dianella ensifolia* DC., NL, H

## POACEAE (GRAMINEAE)

*Acroceras munroanum* (Bal.) Henr., V, H (*A. crassiapiculatum* (Merr.) Alston)  
*Apluda mutica* L. (*A. varia* Hack.), NL, H  
*Arthraxon ciliaris* P. Beauv., NL, H (*A. hispidus* (Thunb.) Makino)  
*Arundinella bengalensis* (Spreng.) Druce, V, H  
*Arundinella nepalensis* Trin. (*A. hispida* Hack.), NL, H  
*Botriochloa glabra* (Roxb.) A. Camus, NL, H (*Andropogon glabra* Roxb., *Amphilophia glabra* (Roxb.) Stapf)  
*Capillipedium cinctum* (Steud.) A. Camus, NL, H  
*Centotheca lappacea* (L.) Desv., V, H  
*Chrysopogon aciculatus* (Retz.) Trin., NL, H  
*Coix lachryma-jobi* L. var. *ma-yuen* (Romanet) Stapf, V, Th  
*Cynodon dactylon* Pers., NL, H  
*Cyrtococcum oxyphyllum* (Steud.) Stapf, V, H (*C. pilipes* (Nees & Arn.) A. Camus)  
*Cyrtococcum patens* (L.) A. Camus, V, H  
*Dactyloctenium aegyptium* (L.) Willd., NL, Th (*D. aegyptiacum* Willd.)  
*Dendrocalamus giganteus* Munro, V, PhH

*Dendrocalamus longifibriatus* Gamble, V, PhH  
*Dendrocalamus membranaceus* Munro, V, PhH  
*Digitaria timorensis* (Kunth) Bal., NL, Th (*D. propinqua* Gaudich.)  
*Digitaria violascens* Link, NL, Th  
*Echinochloa colona* (L.) Link, NL, Th  
*Echinochloa crusgalli* (L.) P. Beauv., NL, Th  
*Echinochloa frumentacea* (Roxb.) Link, NL, Th (*E. crusgalli* (L.) P. Beauv. var. *frumentaceum* Trin.)  
*Eleusine indica* (L.) Gaertn., V, Th  
*Eragrostis geniculata* Nees, NL, H  
*Eragrostis interrupta* P. Beauv., NL, Th  
*Eragrostis nigra* Nees ex Steud., NL, Ch  
*Eragrostis pilosa* (L.) P. Beauv., NL, Th var. *pilosa* var. *imberbis* Franch.  
*Eragrostis stenophylla* Hochst. ex Miq., NL, Th  
*Eragrostis unioloides* (Retz.) Nees ex Steud., NL, Th  
*Eragrostis zeylanica* Nees & Mey., NL, H (*E. elongata* auct. non Jacq.)  
*Eulalia phaeotrix* (Hack.) Kuntze, var. *phaeotrix*, NL, Cr  
*Hackelochia granularis* (L.) Kuntze, NL, Th (*Manisuris granularis* (L.) L.f.)  
*Hemarthria compressa* (L.f.) R. Br., NL, H  
*Hymenachne polymorpha* Bal., NL, H (*Sacciolepis polymorpha* (Bal.) A. Chase)  
*Imperata cylindrica* (L.) P. Beauv., NL, Cr  
*Isachne globosa* (Thunb.) Kuntze, NL, H  
*Isachne miliacea* Roth, NL, H (*I. polygonoides* auct. non Doll.)  
*Ischaemum rangacharianum* C.E.C. Fischer, NL, H (*I. aristatum* auct. non L.)  
*Ischaemum rugosum* Salisb. var. *segetum* (Trin.) Hack., NL, Th  
*Leersia hexandra* Sw., NL, Th  
*Leptochloa panicea* (Retz.) Ohwi., V, Th (*Leptochloa filiformis* auct. non P. Beauv.)  
*Lophatherum gracile* Brongn., NL, H  
*Microstegium ciliatum* (Trin.) A. Camus, V, Th  
*Microstegium vagans* (Nees) Merr., NL, Th  
*Miscanthus floridulus* (Labill.) Warb., NL, Cr ex K. Schum. & Lauterb. (*M. japonicus* Anderss.)  
*Narenga porphyrocoma* (Hance ex Trimen) Bor., NL, H (*Saccharum narenga* Wall.)  
*Neobouzeaua dulloa* A. Camus, NL, PhH  
*Neyraudia arundinacea* (L.) Herr. var. *zollingeri* (Buse) Herr., NL, H (*Arundo madagascariensis* Kunth var. *zollingeri* A. Camus)  
*Oplismenus compositus* (L.) P. Beauv. var. *compositus*, NL, H  
*Oplismenus compositus* (L.) P. Beauv. var. *owtani* (Honda) Nguyen, NL, H

- Panicum bisulcatum* Thunb., NL, Ch (*P. acroanthum* Steud.)  
*Panicum brevifolium* L., NL, H  
*Panicum incomitum* Trin., NL, H  
*Panicum luzoniense* C. Presl, NL, Th  
*Paspalum conjugatum* Berg., NL, Th  
*Paspalum longifolium* Roxb., NL, H  
*Paspalum orbiculare* Forst., NL, Ch  
*Paspalum scrobiculatum* L., NL, H  
*Paspalum alopecuroides* (L.) Spreng., NL, H (*P. compressum* R. Br.)  
*Pennisetum purpureum* K. Schum., V, Th  
*Phragmites communis* Trin., V, H (*P. vulgaris* Trin.)  
*Pogonatherum crinitum* (Thunb.) Kunth, NL, H  
*Polytoca digitata* (L.f.) Druce), V, Th (*P. heteroclita* (Roxb.) Koord.)  
*Pseudochinolaena polystachya* (H.B.K.) Stapf, NL, Th  
*Rottboellia exaltata* L.f., V, Th  
*Saccharum arundinaceum* Retz., V, H  
*Saccharum spontaneum* L., NL, Ch  
*Sacciolepis indica* (L.) A. Chase, NL, Th  
*Schizachyrium brevifolium* (Sw.) Nees ex Buse, NL, Th  
*Selerachne punctata* R. Br., NL, Th  
*Setaria glauca* (L.) P. Beauv., V, Th (*S. lutescens* (Weig.) P. T. Hubb.)  
*Setaria palmifolia* (Koen.) Stapf, H  
*Setaria sphacelata* (Schum.) Stapf & C.E. Hubb., NL, H  
 ex M. B. Mess (*S. aurea* Hochst. ex A. Braun)  
*Setaria verticillata* (L.) P. Beauv., V, Th  
*Sinocalamus latiflorus* (Munro) Mclure, NL, PhH (*Dendrocalamus latiflorus* Munro)  
*Sorghum nitidum* (Vahl) Pers. var. *nitidum*, NL, H (*S. serratum* (Thunb.) Stapf var. *nitidum* A. Camus)  
*Sorghum propinquum* (Kunth) Hitchc., NL, H (*S. affine* (J. Presl) A. Camus),  
*Sporobolus indicus* (L.) R. Br., NL, H  
*Stonotaphrum holferi* Munro, NL, H  
*Themeda villosa* (Poir.) Dur.ex Jacks, NL, Ch  
*Thysanolenia maxima* (Roxb.) Kuntze, NL, H  
*Urochloa paspaloides* J. Presl ex Presl, NL, Th (*Brachiaria ambigua* (Trin.) A. Camus),  
*Urochloa reptans* (L.) Stapf, NL, Th
- PONTEDERIACEAE**  
*Eichornia crassipes* (Maret.) Solms, NL, H  
*Monochooria vaginalis* (Burm.f.) Presl, NL, Cr
- SMILACACEAE**  
*Smilax baubinioides* Kunth, V, Cr  
*Smilax bracteata* Presl, V, Cr (*S. stenopetala* A. Gray)  
*Smilax lancaefolia* Roxb., V, Cr  
*Smilax ovalifolia* Roxb., V, Cr (*S. macrophylla* Roxb.)  
*Smilax perfoliata* Lour., V, Cr  
*Smilax riparia* A. DC., V, Cr
- STEMONACEAE**  
*Stemona saxorum* Gagnep., V, Cr  
*Stemona tuberosa* Lour., V, Cr
- TACCACEAE**  
*Tacca plantaginea* (Hance) Drenth, V, Th (*Schizocapsa plantaginea* Hance)  
*Tacca integrifolia* Ker-Gawl. V, Cr (*T. laevis* Roxb.)  
*Tacca chantrieri* Andr., V, Cr (*T. paxiana* Limpr.)
- TRILLIACEAE**  
*Paris chinensis* Franch., V, Cr  
*Paris hainanensis* Merr., V, Cr
- ZINGIBERACEAE**  
*Alpinia nutans* Rosc., V, Cr  
*Alpinia chinensis* (Retz.) Rosc., V, Cr  
*Alpinia tonkinensis* Gagnep., V, Cr  
*Amomum biflorum* Jack, V, Cr  
*Amomum ovoides* Pierre ex Gagnep., V, Cr  
*Amomum thyrsoideum* Gagnep., V, Cr  
*Amomum vespertilio* Gagnep., V, Cr  
*Curcuma elata* Roxb., V, Cr  
*Curcuma stenochila* Gagnep., V, Cr  
*Kaempferia rotunda* L., V, Cr  
*Zingiber cassumunar* Roxb., V, Cr  
*Zingiber monophyllum* Gagnep., V, Cr  
*Zingiber rubens* Roxb., V, Cr  
*Zingiber zerumbet* (L.) J.E. Sm., V, Cr

## REFERENCES

- ANONYMOUS. 1971–1974. Flora Hainanica, I–IV Beijing.  
 ANONYMOUS. 1977–1980. Flora Yunnanica. I–V Beijing.  
 ANONYMOUS. 1971–1975. Iconographia cormophytorum sinicorum. I–V. Sci. Publ. House. Beijing.  
 ANONYMOUS. 1971. List of Cucphuong plants. Hanoi.  
 AUBREVILLE, A., TARDIEU-BLOT, E. VIDAL (eds.). 1960–1994. Flore du Cambodge, du Laos et du Vietnam. Paris. Vols. 1–27.



- CHAN, L.T., PHAN KE LOC, NGUYEN NGHIA THIN, and NONG VAN TIEP. 1995. Contribution of research for some basic characters of Lamson flora. Collected scientific works on geography. Sci.-Tech. Publ. House, Hanoi. Pp. 285–297.
- COLANI, M. 1920. Etude sur les flores Tertiaires de quelques gisements de lignite de l'Indochine et du Yunnan. Hanoi-Haiphong.
- DANH, T. 1985. Fossil of Dipterocarpaceae. Workshop on Dipterocarpaceae in Ho Chi Minh City. Vietnam
- \_\_\_\_\_. 1986. Neogenflora in North Vietnam and its significance. Abstract of doctoral thesis. Hanoi
- DO, TAT LOI. 1991. Vietnamese medicinal plants and ingredients. Ed. 7. Sci. Techn. Publ. House, Hanoi.
- LECOMTE, H. (ed.). 1907–1951. Flore Géneérale de l'Indo-chine. I–VII Paris.
- NGUYEN, XUAN DUNG, NGUYEN BOI QUYNH, VU VAN DUNG, VU VAN CAN, NGUYEN NGOC CHINH, NGUYEN NGHIA THIN, NGUYEN KIM DAO, TAN HOP, TRAN TUYET ANH, PHAM MANH TAI, and CAO THUY CHUNG. 1971–1988. Forest trees of Vietnam. I–VIII. Agric. Publ. House, Hanoi (in Vietnamese).
- NGUYEN, TIEN BAN, PHAN KE LOC, and TRAN DINH DAI (eds.). 1984. List of Taynguyen plants. Biol. Inst. Hanoi.
- PHAM, HOANG HO, 1970, 1971. Flora of South Vietnam. I-II. Ministry of Education, Saigon.
- POCS, T. 1965a. Analyse aire-geographique et ecologique de la flore du Vietnam North. Egri Pedagóg. Föisk. Évk. (Acta Acad. Paed. Agriens. Hungari.).
- \_\_\_\_\_. 1965b. Prodome de la Bryoflore du Vietnam. Eget.
- RAUNKIAER, C. 1934. The life-form of plants and statical plant geography XVII. Oxford.
- TAKHTAJAN, A.L. 1966. Systema et phylogenic Magnoliophytorum. Moscow-Leningrad.
- TAKHTAJAN, A.L. 1969. Flowering plants origin and dispersal. Edinburgh.
- \_\_\_\_\_. 1987. Systema Magnoliophytorum. Lenino Poli.
- THIN, N.W. 1987. Some new species of Euphorbiaceae in Vietnam. J. Biol. (Vietnam) 9(2):37–39.
- \_\_\_\_\_. 1992. Cuc Phuong Botanic Garden Viet Nam. Bot. Gard. Conserv. News 1:31–33
- THIN, N.W. (ed.). 1992. Update list of the Cucphuong flora. Hanoi.
- THIN, N.W. 1995. Vietnamese flora and its relationship with Flora Malesiana. Proc. NCST Vietnam. 7:65–73.
- TRUNG, T.V. 1978. Vegetation of Vietnam forest. Ed. 2. Sci. Techn. Publ. House. Hanoi.
- TU, V.N. 1987. Preliminary study of Pteridophytes on Vietnam. J. Biol. (Vietnam) 9(2): 22–27.